



MILESIGHT H.265+ PRODUCT BROCHURE

Play

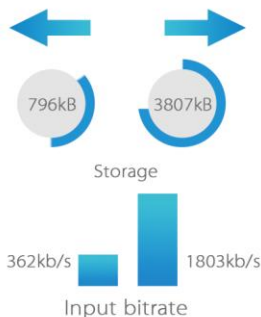


Established in 2011, Milesight is a high-tech company specializing in the design and manufacture of best-in-class video surveillance solutions of security cameras, NVR and software. Focusing on the high quality, Milesight solutions, products and services reach over 80 countries and regions. And we now have Milesight China, Milesight USA, Milesight Korea and Milesight Taiwan taking responsibility for different Areas. The Production Center and R&D Center locate in China. Guaranteeing both Milesight and its customers benefit, Milesight forms a healthier and value-added channel management network. Now the channel partners covers Asia, the America, Europe, Middle East, Oceania, Africa, etc. And we are still in endless pursuit of Better Inside, More in Sight.

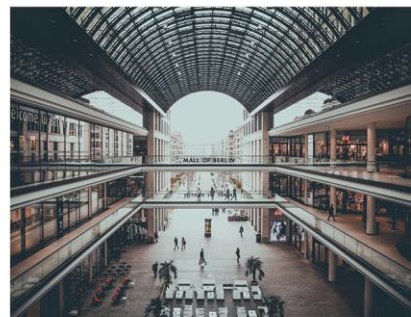
• **H.265+** Play ▶

As the latest and the best video compression technology, H.265+ codec remarkably reduces the bandwidth and the data storage requirements for network cameras. Compared with H.264, Milesight H.265+ combines the technology of Bitrate Control and P-frames Control to cut down 70%~80% bandwidth while ensuring the high quality of images. It is adjustable for it has 10 levels, which allows users to set different bandwidth saving degrees under various circumstances. H.265+ tremendously minimizes the occupancy of bandwidth and maximizes the overall capability.

H.265+



H.264



H.265+, the advanced video codec, saves 70%~80% bandwidth compared with H.264

• **Ultra-high Definition (4K&12MP)**

High definition offers good details while ultra-high definition enables ultimate clarity image in which no detail will be missed. Sharper pixel, brighter color and much more details are what Milesight 4K and 12MP network camera series bring to users.



• **Milesight VCA** Play ▶

Milesight Video Content Analysis (VCA) is an embedded application package for the whole Milesight Network Camera series which enhances the performance of Milesight cameras through 10 detection modes including Region Entrance, Region Exiting, Advanced Motion Detection, Tamper Detection, Line Crossing, Loitering, Human Detection, People Counting, Object Left and Object Removed.



Region Entrance



Region Exiting



Advanced Motion Detection



Tamper Detection



Line Crossing



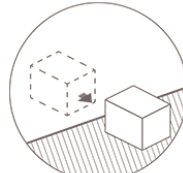
Loitering



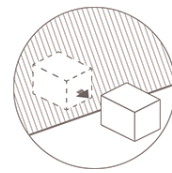
Human Detection



People Counting



Object Left



Object Removed

• Smart IR II

Milesight Smart IR II Technology has greatly satisfied different distance requirements and flexibly fitted various application scenarios. The IR intensity is adjustable to fit different lighting conditions in various specific viewing angles, which would guarantee the image quality to avoid problem of overexposure and darkness.



Regular Image



Smart IR II

• Powerful Auto Back Focus

Equipped with Auto Back Focus Technology, Milesight box cameras are able to adjust the position of the image sensor for optimal focus to complete the last step of focusing by pressing only one button.



• IP67&IK10 Play ▶

The weather-proof and vandal-proof capacity are the solid foundation to guarantee the stable and reliable operation of the network camera. Applied in most models, the IP67-rated weather-proof and IK10-rated vandal-proof which are the leading level of the industry protect the cameras against adverse impacts to ensure the performance.



• License Plate Recognition (LPR/ANPR) Play ▶

Embedded in the camera with no PC server required, the LPR allows the network cameras automatically to detect and capture license plate in real time and then compare with a predefined White/Black list. Then it will take appropriate action such as generating an alert once the license plate is on the predefined black list.



• Face Detection

Automatically capturing of high quality faces, the Face Detection allows to identify human faces in the images for various applications and industries.

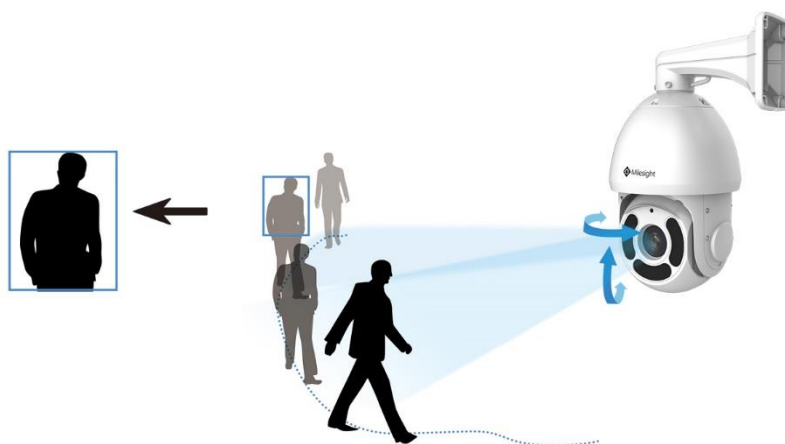


Face
Detection

Automatic Capture of
High-quality Face

• PTZ Auto Tracking

Once PTZ Auto Tracking function enabled, Milesight PTZ Network Camera Series could leverage motor mechanism to perform Pan/Tilt/Zoom to track the moving object automatically and adjust zoom status flexibly according to the object distance with the powerful optical zoom capability.



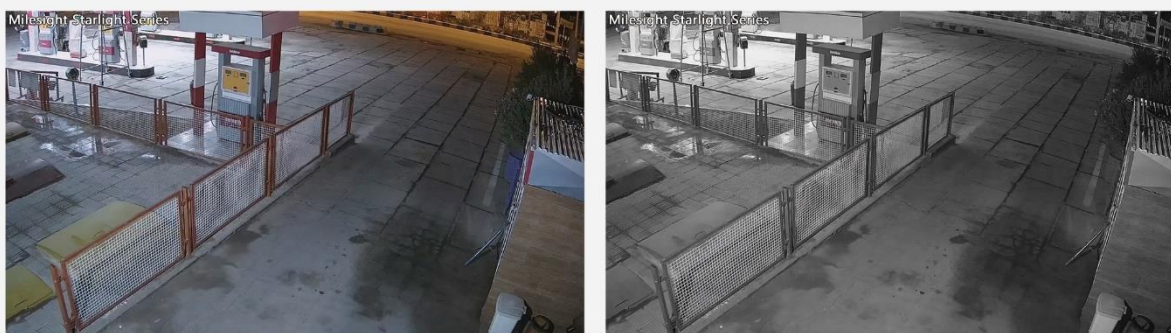
• 3 in 1 Super WDR Pro - 140dB [Play](#)

Milesight upgraded 3 in 1 Super WDR Pro outputs three frames each line, which is able to bring more details for moving subjects. What's more, it greatly improves image quality for reducing smear and noisy points. The ratio that the brightest light signal values divided by the darkest light signal values is 140dB.



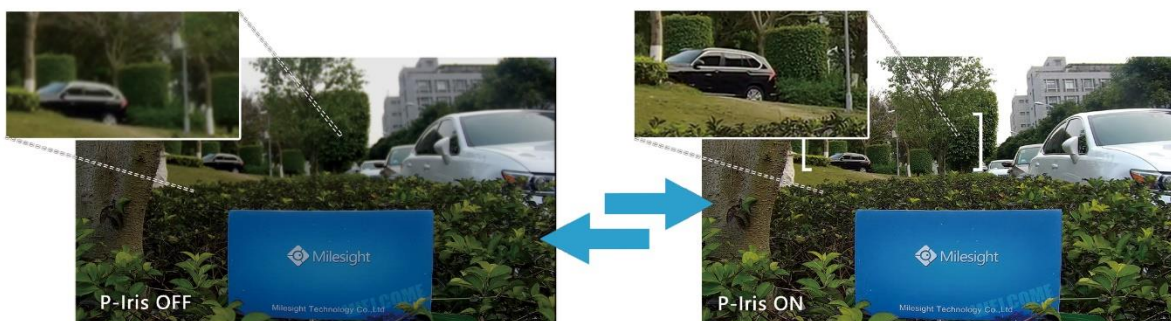
• Ultra Low-light Capability [Play](#)

The Milesight Starlight Premium Series can function in minimal light conditions reaching 0.001Lux(Color) or 0Lux(B/W), delivering clear videos in low illumination and near infrared light environments without any supplementary lighting.



• P-Iris [Play](#)

The Milesight network camera with P-Iris control technology is able to precisely control the iris opening in all lighting conditions, offering images with better contrast, clarity, resolution and depth of field.



• 120fps

With the industry leading frame rate reaching 120fps, the cameras can easily catch images with no latency despite of the high-speed movement, which is the best choice for the demanding requirements especially for intelligent cameras.



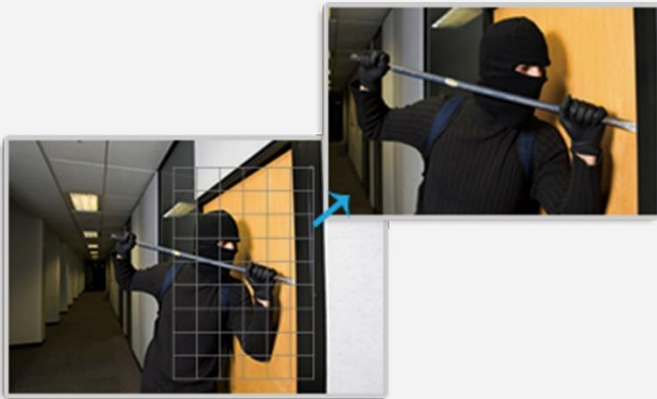
30fps@1080P



120fps@1080P

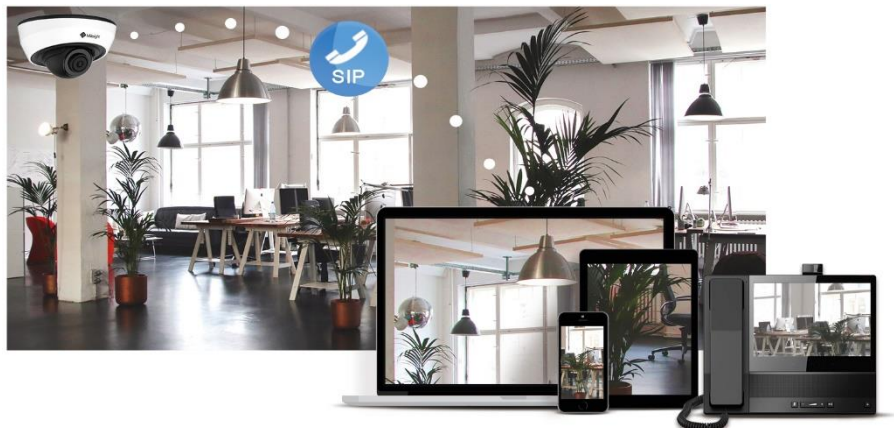
• Smart PTZ Motion Detection

This function enables the user to monitor specific area clearly and timely. When there is a motion that detected in a specified area, Milesight PTZ cameras will pan and tilt to the position automatically. Then zoom in to provide a clear image for a duration of time. If the duration expires, the camera will resume to its previous monitoring position and zoom level.



• SIP/VoIP 

Cameras with SIP can be integrated with VoIP systems to build more efficient and convenient security solutions such as receiving alarm push notifications and then checking the live view from network cameras via mobile applications, or watching what is happening in front of the network camera through VoIP telephony system.



• New File System

Applied with the New Milesight File System (MSFS), Milesight NVRs bring completely new user-experience, making it faster, more responsive, more stable and more enjoyable.

- **Convenient Playback**

With feature-rich playback interface and functional playback types of General, Event, Tag and Picture Playback, the Playback of the NVR is boast to provide different and efficient operation.

- **Superior Retrieve**

Allowing to easily search, view and backup, the Retrieve function which is newly added to the file system guarantees simple and fast management, satisfying various demands.



• 4K Video Viewing Experience

Milesight 4K NVR series support up to 4K definition live-view, playback and recording, providing ultra-high definition viewing experience.

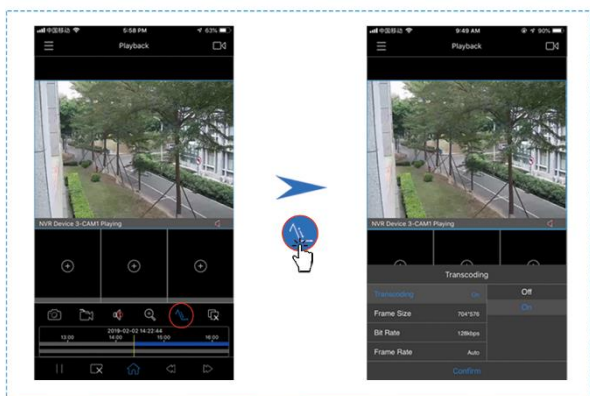
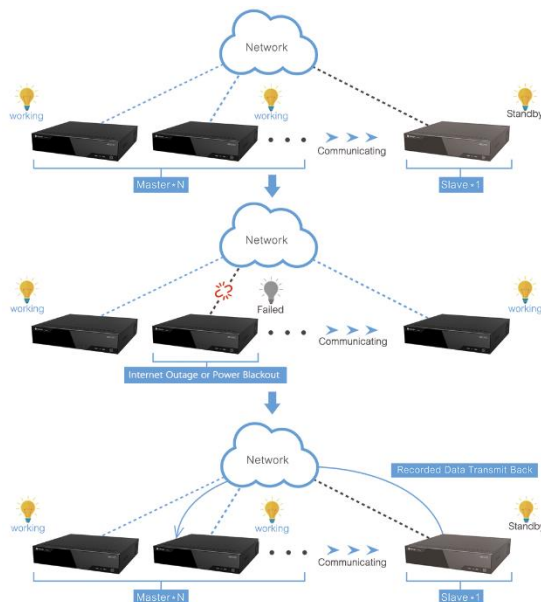
• Plug and Play

Independent PoE ports for easy connection and configuration of network cameras. The NVR will automatically detect, configure and play the live view of PoE network cameras once the cable is plugged.



• Milesight N+1 Hot Spare

Configured as the architecture of N pcs Master NVRs and 1 hot spare Slave NVR, Milesight N+1 Hot Spare guarantees the data integrity and reliability of video surveillance system. If any one of the Master NVRs fails, the Slave NVR can take over the data to ensure continuous video recording. Meanwhile, when the failed NVR recovered, the Slave NVR will send the data back to prevent the risk of data loss.

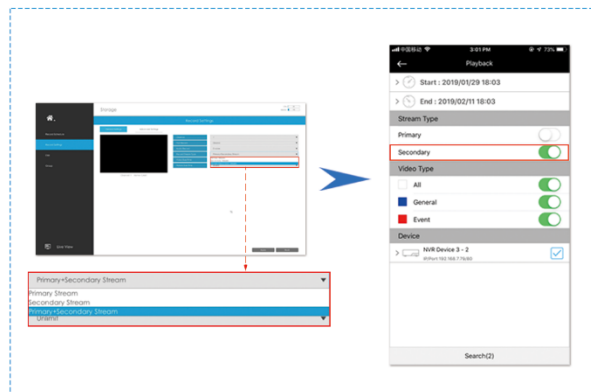


• Transcoding

Transcoding (For Milesight NVR models end in H) could be set at M-Sight Pro or NVR web page to transcode the recorded stream into a smaller one, aiming to reduce the network load and provide better playback performance. If under a poor internet connection, transcoding is recommended to turn on before playing the view.

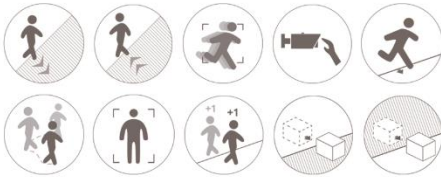
• Dual Stream Recording

Dual Stream Recording (For Milesight NVR models end in T) enables to record in Primary+Secondary Stream. In that way, you can get a quick and smooth playback just in a second with Secondary Stream for the remote viewing need and primary stream for local playback.



• P2P

By scanning the QR code on NVR web-page, users can add equipment to mobile phone and watch live view in WAN by P2P on M-Sight Pro and CMS. It is a truly convenient way of monitoring for it is unnecessary to do port forwarding.



• VCA

With the availability of the VCA, Milesight NVRs label themselves as intelligent on the basis of the powerful file system MSFS. The easy setup and good compatibility will have no doubt to offer delightful user experience.



• Powerful Decoding and Recording Performance

Enabling synchronously decoding up to 16-CH 1080P network cameras and record up to 32-CH 5MP high resolution cameras to the maximum extent, Milesight NVRs are ideal for those applications requiring robust decoding and recording performance.



2/5 Megapixel H.265+ Vandal-proof Mini Dome Camera

H.265+ / ULTRA-MINI SIZE / SMART IR / SUPER WDR / IP67 / IK10 / PoE

Features with the smallest and exquisite design, PoE functionality, IP67-rated housing and SIP/VoIP.

ONVIF



[Click Here to View Datasheet](#)



KEY FEATURES

- 0.002Lux Starlight
- 140dB Super WDR
- Support microSD/SDHC/SDXC card local storage
- Built-in Microphone
- Built-in efficient IR LEDs, IR distance up to 25m
- Rugged Design with EN50155 Compliance
- Support Video Content Analysis(Optional)

Dimensions/Weight: 118.5mmX110.8mmX65mm/500gm

Model	MS-C2973-PB	MS-C5373-PB
Megapixel	2MP	5MP
Image Sensor	1/2.8" Progressive Scan CMOS	
Lens	2.8mm @F2.0 / 3.2mm @F2.2 / 3.6mm @F2.2	
Field of View	H123°/D142°/V68° (2.8mm)	H111°/D141°/V82° (2.8mm)
WDR	140dB Super WDR	120dB Super WDR
Image Resolution	30fps@(1920x1080) 30fps@(1280x960)	20fps@(2592x1944) 30fps@(1920x1080)
Min. Illumination	Color: 0.002Lux@F1.2 B/W: 0Lux with IR on	Color: 0.005lux@F1.2 B/W: 0Lux with IR on
Video Compression	H.265+/H.265(HEVC)/H.264+/H.264/MJPEG	
Protocol	IPV4/IPv6, TCP, UDP, RTP, RTSP, RTCP, HTTP, HTTPS, DNS, DDNS, DHCP, FTP, NTP, SMTP, SNMP, UPnP, SIP, PPPoE, VLAN, 802.1x, QoS, IGMP, ICMP, SSL	

2/5 Megapixel H.265+ AF Motorized Mini Dome Camera

H.265+ / 3X OPTICAL ZOOM / AUTO FOCUS / SMART IR II / IP67 / IK10 / PoE / DC12V

Features with smallest and exquisite design, 3-axis mechanical design, AF Lens, PoE functionality and SIP/VoIP.

ONVIF



[Click Here to View Datasheet](#)



KEY FEATURES

- 0.002Lux Starlight
- 140dB Super WDR
- Support microSD/SDHC/SDXC card local storage
- Built-in Microphone
- Built-in efficient IR LEDs, IR distance up to 35m
- Support Video Content Analysis(Optional)

Dimensions/Weight: Φ108X96.5mm/620g

Model	MS-C2975-EPB	MS-C5375-EPB
Megapixel	2MP	5MP
Image Sensor	1/2.8" Progressive Scan CMOS	
Lens	2.8-8.4mm @F1.8-F2.7, 3x Optical Zoom	
Field of View	H111°~H48°/D130°~D55°/V60°~V27°	H101°~H42°/D129°~D53°/V74°~V31°
WDR	140dB Super WDR	120dB Super WDR
Image Resolution	30fps@(1920x1080) 30fps@(1280x960)	20fps@(2592x1944) 30fps@(1920x1080)
Min. Illumination	Color: 0.002Lux@F1.2 B/W: 0Lux with IR on	Color: 0.005Lux@F1.2 B/W: 0Lux with IR on
Video Compression	H.265+/H.265(HEVC)/H.264+/H.264/MJPEG	
Protocol	IPV4/IPv6, TCP, UDP, RTP, RTSP, RTCP, HTTP, HTTPS, DNS, DDNS, DHCP, FTP, NTP, SMTP, SNMP, UPnP, SIP, PPPoE, VLAN, 802.1x, QoS, IGMP, ICMP, SSL	

2/5 Megapixel H.265+ Vandal-proof Mini Bullet Camera

H.265+ / ULTRA-MINI SIZE / smart IR / super WDR / IP67 / IK10 / PoE

Features with the exquisite design, built-in IR illuminators, IP67-rated housing, PoE functionality and SIP/VoIP.

ONVIF



[Click Here to View Datasheet](#)



KEY FEATURES

- 0.002Lux Starlight
- 140dB Super WDR
- Support microSD/SDHC/SDXC card local storage
- Built-in ICR Filter for Day/Night switching
- Built-in efficient IR LEDs, IR distance up to 30m
- Support Video Content Analysis(Optional)

Dimensions/Weight: Φ 64mmX160mm/450gm

Model	MS-C2964-PB	MS-C5364-PB
Megapixel	2MP	5MP
Image Sensor	1/2.8" Progressive Scan CMOS	
Lens	2.8mm @F2.0 / 3.2mm @F2.2 / 3.6mm @F2.2 / 6mm @F1.6	
Field of View	H123°/D142°/V68°(2.8mm)	H113°/D144°/V84°(2.8mm)
WDR	140dB Super WDR	120dB Super WDR
Image Resolution	30fps@(1920x1080) 30fps@(1280x960)	20fps@(2592x1944) 30fps@(1920x1080)
Min. Illumination	Color: 0.002Lux@F1.2 B/W: 0Lux with IR on	Color: 0.005Lux@F1.2 B/W: 0Lux with IR on
Video Compression	H.265+/H.265(HEVC)/H.264+/H.264/MJPEG	
Protocol	IPv4/IPv6, TCP, UDP, RTP, RTSP, RTCP, HTTP, HTTPS, DNS, DDNS, DHCP, FTP, NTP, SMTP, SNMP, UPnP, SIP, PPPoE, VLAN, 802.1x, QoS, IGMP, ICMP, SSL	

2/5/8 Megapixel H.265+ Vandal-proof Motorized Mini Bullet Camera

H.265 / REMOTE FOCUS&ZOOM / Super wdr PRO / SMART IR II / IP67 / IK10 / PoE / DC12V

Features with the exquisite design, built-in IR illuminators, IP67-rated housing, PoE functionality and SIP/VoIP.

ONVIF



[Click Here to View Datasheet](#)



[MS-C8164-FPB Datasheet](#)

KEY FEATURES

- 0.001Lux Starlight
- Up to 3840x2160 ultra high definition
- 140dB Super WDR(Super WDR Pro is optional)
- Support microSD/SDHC/SDXC card local storage
- Built-in ICR Filter for Day/Night switching
- Built-in efficient IR LEDs, IR distance up to 45m
- Support Video Content Analysis(Optional)

Dimensions/Weight: Φ 76X239.5mm/825g

Model	MS-C2864-(R)F(I)PB	MS-C2964-(T)(R)F(I)PB	MS-C5364-(H)F(I)PB	MS-C8164-F(I)PB
Megapixel	2MP		5MP	4K
Image Sensor	1/2" Progressive Scan CMOS	1/2.8" Progressive Scan CMOS		1/2.5" Progressive Scan CMOS
Lens	Motorized 3.6~10mm @F1.4 P-Iris(Optional)	Motorized 2.8~12mm/3.0~10.5mm/7~22mm @F1.4 P-Iris(Optional)		Motorized 3.3~12mm @F1.4 P-Iris(Optional)
Field of View	H99°~H44°/D114°~D50°/V56°~V24°	H84°~H31°/D94°~D35°/V46°~V15°(2.8~12mm)	H77°~H28°/D96°~D35°/V58°~V21°(2.8~12mm)	H101°~H39°/D116°~D46°/V56°~V21°
WDR	140dB Super WDR	140dB Super WDR(Super WDR Pro is optional for T Series)	120dB Super WDR	
Image Resolution	30fps@(1920x1080) 30fps@(1280x960) 60fps@(1920x1080)(Optional)	30fps@(1920x1080) 60fps@(1920x1080)(Optional for R Series) 90fps@(1920x1080)(Optional for T Series)	20fps@(2592x1944) 30fps@(1920x1080) 30fps@(2592x1944)(Optional)	15fps@(3840x2160) 30fps@(3072x2048)
Min. Illumination	Color: 0.001Lux@F1.2 B/W: 0Lux with IR on	Color: 0.002Lux@F1.2 B/W: 0Lux with IR on	Color: 0.005Lux@F1.2 B/W: 0Lux with IR on	Color: 0.01Lux@F1.2 B/W: 0Lux with IR on
Video Compression	H.265+/H.265(HEVC)/H.264+/H.264/MJPEG			
Protocol	IPv4/IPv6, TCP, UDP, RTP, RTSP, RTCP, HTTP, HTTPS, DNS, DDNS, DHCP, FTP, NTP, SMTP, SNMP, UPnP, SIP, PPPoE, VLAN, 802.1x, QoS, IGMP, ICMP, SSL			

2/5/8 Megapixel H.265+ Motorized Pro Bullet Camera

H.265+ / REMOTE FOCUS&ZOOM / SMART IR II / SUPER WDR PRO / IP67 / IK10 / PoE

Features with built-in IR illuminators, IP67-rated housing, PoE functionality and SIP/VoIP.



[Click Here to View Datasheet](#)



[MS-C8162-F\(I\)PB Datasheet](#)

KEY FEATURES

- 0.001Lux Starlight
- Up to 3840x2160 ultra high definition
- 140dB Super WDR(Super WDR Pro is optional)
- Support microSD/SDHC/SDXC card local storage
- Smart IR II Technology, IR distance up to 60m/100m(Optional)
- Support Alarm I/O, Audio I/O and DC12V
- Support Video Content Analysis(Optional)

Dimensions/Weight: 134X126X285mm/1080g

Model	MS-C2862-(R)F(I)PB	MS-C2962-(T)(R)F(I)PB	MS-C5362-(H)F(I)PB	MS-C8162-F(I)PB
Megapixel	2MP		5MP	4K
Image Sensor	1/2.8" Progressive Scan CMOS		1/2.5" Progressive Scan CMOS	
Lens	Motorized 3.6~10mm @F1.4 P-Iris(Optional)		Motorized 3.0~10.5mm/2.8~12mm /7~22mm @F1.4 P-Iris(Optional)	
Field of View	H96°~H42°/D111°~D48° /V55°~V23°	H93°~H33°/D107°~D38° /V52°~V18°(3.0~10.5mm)	H90°~H31°/D114°~D38° /V67°~V23°(3.0~10.5mm)	
WDR	140dB Super WDR	140dB Super WDR(Super WDR Pro is optional for T Series)	120dB Super WDR	
Image Resolution	30fps@(1920x1080) 30fps@(1280x960) 60fps@(1920x1080)(Optional)	30fps@(1920x1080) 60fps@(1920x1080)(Optional for R Series) 90fps@(1920x1080)(Optional for T Series)	20fps@(2592x1944) 30fps@(1920x1080) 30fps@(2592x1944)(Optional)	15fps@(3840x2160) 30fps@(3072x2048)
Min. Illumination	Color: 0.001Lux@F1.2 B/W: 0Lux with IR on	Color: 0.002Lux@F1.2 B/W: 0Lux with IR on	Color: 0.005lux@F1.2 B/W: 0Lux with IR on	
Video Compression	H.265+/H.265(HEVC)/H.264+/H.264/MJPEG			
Protocol	IPv4/IPv6, TCP, UDP, RTP, RTSP, RTCP, HTTP, HTTPS, DNS, DDNS, DHCP, FTP, NTP, SMTP, SNMP, UPnP, SIP, PPPoE, VLAN, 802.1x, QoS, IGMP, ICMP, SSL			

2/4/5 Megapixel 12x H.265+ Mini PoE PTZ Bullet Camera

H.265+ / 12x OPTICAL ZOOM / AUTO FOCUS / SUPER WDR / SMART IR II / IP66 / PoE

Features with built-in IR illuminators, White LED, IP66-rated housing, PoE functionality and SIP/VoIP.



[Click Here to View Datasheet](#)



KEY FEATURES

- 0.002Lux Starlight
- 12x Optical Zoom
- Wall Mount and Pedestal Mount available
- 255 Preset Positions and 8 Patrols
- Support microSD/SDHC/SDXC card local storage
- Smart IR II Technology, IR distance up to 100m
- Support Video Content Analysis(Optional)

Dimensions/Weight: 291mm*207mm*95mm/2kg

Model	MS-C2961-EPB	MS-C4461-EPB	MS-C5361-EPB
Megapixel	2MP	4MP	5MP
Image Sensor	1/2.8" Progressive Scan CMOS		1/2.9" Progressive Scan CMOS
Lens	5.3~64mm @F1.6~F2.8, 12x Optical Zoom		
Field of View	H58.6°~H5°/D66.5°~D5.8°/V33.7°~V2.8°	H54.5°~H4.7°/D62.6°~D5.4°/V32.5°~V2.7°	H49°~H3.9°/D59.4°~D4.8°/V38.2°~V2.9°
WDR	140dB Super WDR		120dB Super WDR
Image Resolution	30fps@(1920x1080, 1280x960, 1280x720, 704x576)	20fps@(2592x1520) , 30fps@(2304x1296, 1920x1080, 1280x960, 1280x720, 704x576)	20fps@(2560x1920, 2592x1520), 30fps@(2304x1296, 1920x1080, 1280x960, 1280x720, 704x576)
Min. Illumination	Color: 0.002Lux@F1.2 B/W: 0Lux with IR on	Color: 0.008Lux@F1.2 B/W: 0Lux with IR on	Color: 0.006Lux@F1.2 B/W: 0Lux with IR on
Pan Range / Tilt Range	360° endless/-45°~30°		
Manual Speed	0.2°~60°/s(H); 0.2°~30°/s(V)		
Video Compression	H.265+/H.265(HEVC)/H.264+/H.264/MJPEG		
Protocol	IPv4/IPv6, TCP, UDP, RTP, RTSP, RTCP, HTTP, HTTPS, DNS, DDNS, DHCP, FTP, NTP, SMTP, SNMP, UPnP, SIP, PPPoE, VLAN, 802.1x		

2/5 Megapixel H.265+ PoE Speed Dome Camera

H.265+ / UP TO 30x OPTICAL ZOOM / AUTO FOCUS / SUPER WDR / SMART IR II / IP66/ POE

Features with built-in IR illuminators, IP66-rated housing, PoE functionality and SIP/VoIP.

ONVIF



Click Here to View Datasheet



KEY FEATURES

- 0.002Lux Starlight
- 23x/30x Optical Zoom and 16x Digital Zoom
- 255 Preset Positions and 8 Patrols
- Smart PTZ Motion Detection
- Support microSD/SDHC/SDXC card local storage
- Smart IR II Technology, IR distance up to 200m
- Support Alarm I/O, Audio I/O and AC24V
- Support Video Content Analysis(Optional)

Dimensions/Weight: ϕ 205mmX308mm/4Kg

Model	MS-C2941-X30RPB	MS-C5341-X30HPB
Megapixel	2MP	5MP
Image Sensor	1/2.8" Progressive Scan CMOS	
Lens	4.7~141mm @F1.5 ~ F4.0 30X Optical Zoom, 16X Digital Zoom	
Field of View	H62°~H3°/D70°~D3° /V37°~V1°	H58°~H3°/D71°~D3° /V44°~V2°
WDR	140dB Super WDR	120dB Super WDR
Image Resolution	60fps@(1920x1080)	30fps@(2952x1944)
Min. Illumination	Color: 0.002Lux@F1.2 B/W: 0Lux with IR on	Color: 0.005Lux@F1.2 B/W: 0Lux with IR on
Pan Range / Tilt Range	360° endless/0° ~90° (Auto Flip)	
Manual Speed	0.5° ~180° /s(H); 0.5° ~120° /s(V)	
Video Compression	H.265 ⁺ /H.265(HEVC)/H.264 ⁺ /H.264/MJPEG	
Protocol	IPv4/IPv6, TCP, UDP, RTP, RTSP, RTCP, HTTP, HTTPS, DNS, DDNS, DHCP, FTP, NTP, SMTP, SNMP, UPnP, SIP, PPPoE, VLAN, 802.1x, QoS, IGMP, ICMP, SSL	
PoE(802.3at)	Support	

5/12 Megapixel H.265+ Fisheye Camera

H.265+ / 12MP / 360° PANORAMIC VIEW / 7 DISPLAY MODES / IP67 / IK10 / PoE

Features with 12MP ultra-high resolution, 360° panoramic viewing angle, build-in IR illuminators, vandal-resistant housing, PoE functionality and SIP/VoIP.

ONVIF



Click Here to View Datasheet



KEY FEATURES

- Ceiling mount, wall mount and table mount are available
- Equipped with Alarm I/O and DC12V
- Built-in Microphone and 1 Audio Out interface
- Support microSD/SDHC/SDXC card local storage
- Smart IR II Technology, IR distance up to 15m
- Support Video Content Analysis(Optional)

Dimensions/Weight: ϕ 140X45.4mm/1100g

Model	MS-C5374-PB	MS-C9674-PB
Megapixel	5MP	12MP
Image Sensor	1/2.8" Progressive Scan CMOS	1/1.7" Progressive Scan CMOS
Lens	1.25mm @F2.0	1.98mm @F2.8
WDR	120dB Super WDR	
Image Resolution	Fisheye View: 30fps@(2592x1944)	Fisheye View: 25fps@(4000x3000)
Min. Illumination	Color: 0.005Lux@F1.2 B/W: 0Lux with IR on	Color: 0.01Lux@F1.2 B/W: 0Lux with IR on
Field of View	Ceiling Mount: 360°; Wall Mount: 180°; Flat Mount: 360°	
Video Compression	H.265 ⁺ /H.265(HEVC)/H.264 ⁺ /H.264	
Display Mode	Fisheye View, 360° Panoramic View, 180° Panoramic View, 4PTZ, Fisheye + 3PTZ, 4PTZ, Fisheye + 3PTZ, Panoramic View+3PTZ, Fisheye + Panoramic View+ 3PTZ	Fisheye View, 360° Panoramic View, 180° Panoramic View, 4PTZ, Fisheye + 3PTZ, Panoramic View+3PTZ, Fisheye + Panoramic View+ 3PTZ
Protocol	IPv4/IPv6, TCP, UDP, RTP, RTSP, RTCP, HTTP, HTTPS, DNS, DDNS, DHCP, FTP, NTP, SMTP, SNMP, UPnP, SIP, PPPoE, VLAN, 802.1x, QoS, IGMP, ICMP, SSL	

5 Megapixel 180° panoramic H.265+ Mini Bullet Camera

H.265+ / 180° PANORAMIC VIEW / IP67 & IK10 / PoE / VCA

Features with built-in IR illuminators, weather & vandal proof, PoE functionality and SIP/VoIP.



[Click Here to View Datasheet](#)



KEY FEATURES

- 0.005Lux Starlight
- 180° Panoramic View
- Video Content Analysis
- 120dB Super WDR
- IR Distance up to 15m
- Smart IR II Technology
- IP67 & IK10
- Built-in Microphone, PoE

Dimensions/Weight: 95.8mmX74mmX158.5mm/630gm

Model	MS-C5365-PB
Megapixel	5MP
Image Sensor	1/2.8" Progressive Scan CMOS
Lens	1.68mm @F2.0
Field of View	H180°/V95°
WDR	120dB Super WDR
Image Resolution	30fps@(2592x1944)
Min. Illumination	Color: 0.005Lux@F1.2 B/W: 0Lux with IR on
Video Compression	H.265+/H.265(HEVC)/H.264+/H.264/MJPEG
Protocol	IPV4/IPV6, TCP, UDP, RTP, RTSP, RTCP, HTTP, HTTPS, DNS, DDNS, DHCP, FTP, NTP, SMTP, SNMP, UPnP, SIP, PPPoE, VLAN, 802.1x, QoS, IGMP, ICMP, SSL

4K H.265 Pro NVR 5000/8000 Series

AVAILABLE MODEL : MS-N5008-UT/MS-N5016-UT/MS-N8032-UH/MS-N8064-UH

This series features with concise panel design, considerable storage capacity, rich interfaces, embedded hardware architecture, robust network performance and 4K video quality.

[MS-N5008/16-UT Datasheet](#)

[MS-N8032/64-UH Datasheet](#)



KEY FEATURES

- High profile H.265/H.264 decoding
- Up to 4K high resolution
- Support HDMI and VGA
- Up to 2/8 SATA interfaces, up to 10TB capacity for each SATA
- Friendly GUI for configuration
- Support Instant Playback in Live View
- Support NAS and Disk Group Function

	Model	MS-N5008-UT	MS-N5016-UT	MS-N8032-UH	MS-N8064-UH
Video	Network Video Input	8-CH	16-CH	32-CH	64-CH
	Recording Resolution	8MP/6MP/5MP/4MP/3MP/1080P/UXGA/720P/D1/VGA/CIF/QCIF		12MP/8MP/6MP/5MP/4MP/3MP/1080P/UXGA/720P/D1/VGA/CIF/QCIF	
	Video Output	1*HDMI & 1*VGA		2*HDMI & 2*VGA	
	Synchronous Playback	8x(30fps @1080P)		16x(30fps @1080P)	
	Video Compression	H.265+/H.265(HEVC)/H.264+/H.264			
Storage	HDD	2*SATA HDD(3.5")		8*SATA HDD(3.5")	
		Up to 10TB capacity for each HDD			
External Interfaces	Network Interface	1*RJ45 100M/1000M		2*RJ45 100M/1000M	
	USB	1*USB 3.0; 2*USB 2.0			
	Audio Input / Output	—/1*RCA		1*RCA/2*RCA	
	Alarm Input / Output	4-CH/1-CH		16-CH/4-CH	
General	Compatibility	ONVIF			
	Dimensions / Weight	440mm(W)X251mm(D) X44.4mm(H)/2.6kg		440mm(W)X420mm(D) X88.2mm(H)/6.0kg	

4K H.265 PoE NVR 5000 Series

Available Model: MS-N5008-UPT/MS-N5016-UPT

Features with true plug-and-play, concise panel design, considerable storage capacity, rich interfaces, embedded hardware architecture, robust network performance, up to 4K video quality, mobile connection and high frame rate.



KEY FEATURES

- Support PoE interfaces for plug and play
- High profile H.265/H.264 decoding
- Up to 4K high resolution
- Up to 1/2/4 SATA interfaces, up to 10TB capacity for each SATA
- Friendly GUI for configuration
- Support Instant Playback in Live View
- Support NAS and Disk Group Function

MS-N5008/16-UPT Datasheet

Model		MS-N5008-UPT	MS-N5016-UPT
Video	Network Video Input	8-CH	16-CH
	Synchronous Playback	8x(30fps @1080P)	
	Video Compression	H.265 ⁺ /H.265(HEVC)/H.264 ⁺ /H.264	
	Recording Resolution	8MP/6MP/5MP/4MP/3MP/1080P/UXGA/720P/D1/VGA/CIF/QCIF	
Storage	HDD	2*SATA HDD(3.5")	
		Up to 10TB capacity for each HDD	
External Interfaces	Network Interface	1*RJ45 100M/1000M	
	PoE Interface	4*RJ45 10M/100M	8*RJ45 10M/100M 16*RJ45 10M/100M
	USB	1*USB 3.0; 2*USB 2.0	
	Audio Input / Output	—/1*RCA	
	Alarm Input / Output	4-CH/1-CH	
General	Compatibility	ONVIF	
	Dimensions / Weight	440mm(W)X251mm(D)X44.4mm(H) /3.5kg	

Milesight Network Keyboard

Features with 4-axis joystick, simple and intuitive control panel.

Features with true plug-and-play, concise panel design, considerable storage capacity, rich interfaces, embedded hardware architecture, robust network performance, up to 4K video quality, mobile connection and high frame rate.



MS-K02 Datasheet

KEY FEATURES

- Support Network connection
- Support Milesight NVR and PTZ Camera
- Support 4-axis variable speed joystick, Built-in Web Server
- Designed with a LCD screen on operation panel
- Shortcut keys for PTZ control and NVR control
- Shortcut keys for wiper and light control operation

Model	MS-K02
Control Mode	IP-based
LCD Screen	128X64 Blue Screen
Joystick	4-axis joystick
Network	IPv4, HTTP, TCP, MSSP
Network Interface	1*RJ45 100M/1000M
Serial Interface	1*RS-232/1*RS-485 (Reserved)
Power Supply	DC 12V 1A
Power Consumption	12W MAX
Dimensions	360mmX200mmX105mm
Weight	3kg



Cohesive Technologies came across as the most flexible team to design a Contact Centre Solution .We are very happy with the performance of the product & wish the very best to Cohesive Technologies for future endeavours.

Bhavneet Kaur (Sr. Product Manager)



Cohesive Technology not only understood our Requirements but did Acted as a solution architect & suggested us to integrate Help desk with Back office Solution. Their Knowledge not only on VoIP but also on TDM helped us integrate the Legacy Trunks with Contact Centre (Cradle) & State of Art IPPBX (Grand stream).

Rajesh Loomba (MD Eco Rent a Car)



Esteemed Customers

Real Estate & Enterprise

Education & Healthcare

BFSI

E-Commerce

Manufacturing Units



Grandstream Video Phones GXV3275 in all 2800 Flats Configured on Unified Communication server of Grandstream (UCM6510*2) connected to SIP Surveillance and SIP Door Phones on one Converged Platform by Cohesive Technologies helped us achieve the State of art technology with 3 Tier Security to all our Residents with Voice /Video and Mobility benefits.

Mr.Sunil Totlani (Director ABA Corp)



"Cohesive Technologies gave us solutions post understanding our requirements & optimising our existing infrastructure ,they not only helped us the extensive Contact solutions integrating it with our TDM Nortel but also helped us with SIP PBX at Medanta Clinic & integrating it with Medanta Gurgaon."

Mr. Harmandeep

(Infrastructure Head, Medanta the Medicity)



Cohesive Technologies Pvt. Ltd.

Corporate Office: CS - 4, 5 & 6, 4th Floor, Ansal Plaza, Sector 3, Vaishali, Ghaziabad (U.P.) - 201010, India. Contact No: + 91 120 4830000, +91 7290000544
Registered Office: 454, F.I.E, 2nd Floor, Patpargunj Industrial Area, New Delhi - 110092, India
 Email: info@cohetechnologies.com, info@grandstreamindia.com
 Web: www.cohesiveglobal.com, www.grandstreamindia.com



Bangalore: +91 - 9810036790, **Mumbai:** +91 - 7718880814, **Punjab:** +91 - 9814081331, **Kolkata:** +91 - 9831742584, **Chennai:** +91 - 9810036790
 delhi@cohetechnologies.com, bangalore@cohetechnologies.com, chennai@cohetechnologies.com, mumbai@cohetechnologies.com, punjab@cohetechnologies.com, kolkata@cohetechnologies.com