



VOIP PRODUCT LINES

- ✓ Multimedia IP Phones
- ✓ Mid-Range/High End IP Phones
- ✓ IP PBX Appliances
- ✓ Analog VoIP Gateways
- ✓ Analog Telephone Adapters
- ✓ DECT IP Phones
- ✓ Wireless Access Point
- ✓ HD IP Voice/Video Door Phone
- ✓ Business Conferencing



NEW!



[Click Here For Datasheet](#)

GXV3350

Android Video IP Phone with 5.0" Touchscreen LCD



The GXV3350 is an advanced desktop video collaboration solution that combines a 16 line IP phone with the functionality of an Android tablet to offer an all-in-one communication solution. It is the ideal desktop device for busy professionals and executives and also offers a powerful yet cost-effective device for any conference room.

NEW!



[Click Here For Datasheet](#)

GXV3370

Android Video IP Phone with 7" Touchscreen LCD



The GXV3370 is a powerful desktop video phone for enterprise users. It features a 7" touch screen, 16 lines with up to 16 SIP accounts, 7-way audio conferencing & 3-way 720p 30fps HD video conferencing capability, advanced megapixel camera for HD video conferencing, built-in WiFi and Bluetooth, Gigabit network speeds and innovative telephony functionalities. It also runs on Android 7.0 and has flexible SDK support for custom apps. The GXV3370 is fully interoperable with nearly all major SIP platforms on the market and can be seamlessly integrated with Grandstream's portfolio including SIP based security cameras, door systems, IP PBXs, and video conferencing systems and services. This video phone is the perfect choice for users looking for an integrated video communications solution for their desktop.



[Click Here For Datasheet](#)

GXV3380

8 inch 1280x800 capacitive touch screen



The GXV3380 IP Video Phone for Android combines a 16-line IP video phone with a multi-platform video collaboration solution and the functionality of an Android tablet to offer an all-in-one communications solution.



[Click Here For Datasheet](#)

GDMS

Grandstream Device Management System

Grandstream Device Management System (GDMS) is a zero-touch cloud provisioning and management system that provides easy-to-use enterprise-level tools to manage Grandstream products before, during and after deployment. It provides a centralized interface to provision, manage, monitor and troubleshoot Grandstream Products.



[Click Here For Datasheet](#)

GXP2200EXT

Extension Modules

Extension module used with GXV3240, GXP2140 & GXP2200, Features 20 extension keys and 2 arrow keys for page switching, with bi-color LED alongside a large LCD with 320x160 resolution, Device powered by the host phone, Up to 4 modules can be cascaded to provide simultaneous display of up to 160 extensions.

Carrier-Grade IP phones (GRP 2600 Series)



[Click Here For Datasheet](#)

GRP2612(p/w)

Carrier-Grade IP Phone

The GRP2612 is a powerful 2-line carrier-grade IP phone designed with zero-touch provisioning for mass deployment and easy management. Built for the needs of desktop workers and designed for easy deployment by enterprises, service providers and other high-volume markets, the GRP2612 offers an easy-to-use and easy-to-deploy voice endpoint.



[Click Here For Datasheet](#)

GRP2613

Carrier-Grade IP Phone

The GRP2613 is a powerful 3-line carrier-grade IP phone designed with zero-touch provisioning for mass deployment and easy management. Built for the needs of desktop workers and designed for easy deployment by enterprises, service providers and other high-volume markets, the GRP2613 offers an easy-to-use and easy-to-deploy voice endpoint.



[Click Here For Datasheet](#)

GRP2614

Carrier-Grade IP Phone

The GRP2614 is a 4-line carrier-grade IP phone designed with zero-touch provisioning for mass deployment and easy management. Built for the needs of busy desktop workers and designed for easy deployment by enterprises, service providers and other high-volume markets, the GRP2614 offers an easy-to-use and easy-to-deploy voice platform.



[Click Here For Datasheet](#)

GRP2615

Carrier-Grade IP Phone

The GRP2615 is a 10-line carrier-grade IP phone designed with zero-touch provisioning for mass deployment and easy management. Built for the needs of busy desktop workers and designed for easy deployment by enterprises, service providers and other high-volume markets, the GRP2615 offers an easy-to-use and easy-to-deploy voice platform.



[Click Here For Datasheet](#)

GRP2616

Carrier-Grade IP Phone

The GRP2616 is a 6-line carrier-grade IP phone designed with zero-touch provisioning for mass deployment and easy management. This device was built for the needs of busy desktop workers and designed for easy deployment by enterprises, service providers and other high-volume markets, the GRP2616 offers an easy-to-use and easy-to-deploy voice platform.



[Click Here For Datasheet](#)

GBX20

Extension Module

The GBX20 is a backlit LCD extension module supported by the GXV3350 and GRP2615. The module includes 20 dual-colored extension keys and 2 arrow keys for page switching (allowing each GBX20 to support up to 40 contacts/extensions.). Connect up to 4 GBX20 modules to compatible Grandstream phones for a total of 160 contacts/extensions.



[Click Here For Datasheet](#)

GXP1610/1615

Small-to-Medium Business (SMB) HD IP Phone

Linux-based model features single SIP account, up to 2 call appearances, 3 XML programmable soft keys and integrated PoE (on GXP1615 only), 3-way conference, multi-language support, 132*48 pixel LCD display, Full-duplex hands-free speakerphone with advanced acoustic echo cancellation, Electronic Hook Switch (EHS) with Plantronics headsets



[Click Here For Datasheet](#)

GXP1620/1625

Standard IP phone for small businesses

Linux-based model includes 2 lines, 3 XML programmable soft keys, and 3-way conferencing, integrated PoE (GXP1625 only), 132*48 pixel backlit graphical LCD display, HD wideband audio, superb full-duplex hands-free speakerphone with advanced acoustic echo cancellation & excellent double-talk performance.



[Click Here For Datasheet](#)

GXP1628

Small-to-Medium Business (SMB) HD IP Phone

Linux-based model includes 2 lines, 3 XML programmable soft keys, 8 BLF keys and 3-way conferencing. A 132x48 backlit LCD screen creates a clear display for easy viewing.



[Click Here For Datasheet](#)

GXP1630

Small-to-Medium Business (SMB) HD IP Phone

The GXP1630 is a powerful Gigabit IP phone designed for small businesses. This Linux-based, 3-line IP Phone model includes 8 BLF keys and 4-way conferencing to keep workers in-touch and productive. A 132x64 backlit LCD screen creates a clear display for easy viewing.



[Click Here For Datasheet](#)

Softphone Application

Grandstream Wave is a FREE softphone application

Enable users to move freely and continue to receive calls from any business or residential SIP account. The Grandstream Wave is a free softphone application that allows users to connect to their SIP accounts from anywhere in the world. Utilize on any Android™ or iOS device to increase mobility and stay connected to essential communications.



GXP1760

GXP1760W

GXP1760/GXP1760W

Designed for Growing Business

6 lines, 3 SIP accounts with 6 dual-color line keys and 4 XML programmable soft keys, 200 x 80 pixel back-lit LCD screen, 24 digitally programmable BLF/fast-dial keys on screen, 5-way audio conferencing, with HD audio via handset and full-duplex speakerphone, Integrated USB, PoE and EHS for Plantronics headsets, TLS and SRTP security encryption and an integrated Kensington Security Slot for added security protection. WiFi-enabled (only in GXP1760W)



[Click Here For Datasheet](#)

GXP1780

Designed for Growing Business

8 lines, 4 SIP accounts with 8 dual-color line keys and 4 XML programmable soft keys, Dual 10/100Mbps, 200 x 80 pixel back-lit LCD screen, 32 digitally programmable BLF/fast-dial keys on screen 5-way audio conferencing, with HD audio via handset and full-duplex speakerphone, Integrated USB, PoE and EHS for Plantronics headsets, TLS and SRTP security encryption and an integrated Kensington, Security Slot for added security protection.



[Click Here For Datasheet](#)

GXP1782

Designed for Growing Business

8 lines, 4 SIP accounts with 8 dual-color line keys and 4 XML programmable soft keys, Dual 10/100/1000Mbps Gigabit network ports, 200 x 80 pixel back-lit LCD screen, 32 digitally programmable BLF/fast-dial keys on screen 5-way audio conferencing, with HD audio via handset and full-duplex speakerphone, Integrated USB, PoE and EHS for Plantronics headsets, TLS and SRTP security encryption and an integrated Kensington, Security Slot for added security protection.

Specifications	GXP1760	GXP1780	GXP1782
Lines Keys / BLF Keys	3+3	4+4	4+4
LCD	200x80	200x80	200x80
Network Ports	2x 100M ports	2x 100M ports	2x 100 gigabit ports
PoE	Yes	Yes	Yes
Power Supply	Included	Included	Included



[Click Here For Datasheet](#)

GXP2170

High End HD IP Phone

12 lines, 4.3 inch (480x272) TFT color LCD, 5 programmable soft keys, Bluetooth V2.1, 5-way conference, 12 dual-color line keys that can be digitally programmed as up to 48 provisionable BLF/fast-dial keys.



[Click Here For Datasheet](#)

GXP2160

High End HD IP Phone

6 lines, 4.3 inch (480x272) TFT color LCD, 5 programmable soft keys, Bluetooth V2.1, 5-way conference, 24 programmable Multi-Purpose Keys.



[Click Here For Datasheet](#)

GXP2140

High End HD IP Phone

4 lines, 4.3 inch (480x272) TFT color LCD, 5 programmable soft keys, Bluetooth V2.1, 5-way conference, Expansion board.



[Click Here For Datasheet](#)

GXP2135

High End HD IP Phone

8 lines, 4 SIP accounts, 4 XML programmable context-sensitive soft keys, Dual switched, auto-sensing Gigabit ports, built-in PoE, 32 digitally programmable and customizable BLF/speed-dial keys, HD audio, 4-way audio conferencing.



[Click Here For Datasheet](#)

GXP2130

High End HD IP Phone

3 lines, 2.8 inch (320x240) TFT color LCD, 4 programmable soft keys, Bluetooth V2.1(GXP2130v2 only), 8 programmable Multi-Purpose Keys, 4-way conference.

Specifications	GXP2170	GXP2160	GXP2140	GXP2130	GXP2135
Line Keys & SIP Accounts	12 Line keys, 6 SIP accounts	6 Line keys, 6 SIP accounts	4 Line keys, 4 SIP accounts	3 Line keys, 3 SIP accounts	8 Line Keys, 4 SIP accounts
Network & Headset Ports	2 x 10M/100M/1000M (Gigabit) Network Ports, PoE				
Peripheral Interfaces	Integrated Bluetooth, USB, RJ9, Headset Jack			RJ9, Integrated Bluetooth	
Voice Codexes	Support for G.729A/B, G.711µ/a-law, G.726, G.722 (wide-band), in-band and out-of-band DTMF (in audio, RFC2833, SIP INFO)				
Security and Provisioning	TLS/SRTP, 802.1x, TR-069, Encrypted XML config file, TFTP/HTTP/HTTPS				
Personalized Web Apps	Weather, currency, GMI available for advanced custom application development				
Expansion Module/BLF Keys	48 on-screen digitally customizable BLF keys	24 BLF/speed dial keys	Supports 4 GXP2200EXT modules	8 BLF/speed-dial keys	32 BLF/fastdial Keys
Multi-language	English, German, Italian, French, Spanish, Portuguese, Russian, Turkish, Polish, Chinese, Korean, Japanese, Czech, Arabic, Hebrew, Croatian, Hungarian, Dutch, Slovenian and more				
Universal Power Supply	12V, 1.0A/A/C Adapter included			12V, 0.5A/A/C Adapter included	



[Click Here For Datasheet](#)

UCM6202/6204

IP PBX Appliance For Small Businesses

UCM6200 Series offers a centralized solution for small and medium sized businesses (SMBs) with easy to manage enterprise level voice, video and data features. UCM6202 and UCM6204 support up to 500 users and 30/45 concurrent calls. 2 gigabit ports, PoE / USB / SD support, 2 / 4 FXO ports, 2 FXS ports, 3 conference bridges, DHCP server support.



[Click Here For Datasheet](#)

UCM6208

IP PBX Appliance For Large Businesses

UCM6200 Series IP PBX appliances are a powerful tool that can support up to 800 users and 50 SIP accounts. The Grandstream UCM6208 IP PBX supports up to 100 concurrent SIP calls and up to 50 WebRTC calls. 2 gigabit ports, PoE / USB / SD support, 8 FXO ports, 2 FXS ports, 6 conference bridges, DHCP server support.



[Click Here For Datasheet](#)

UCM6510

TI/E1/J1 IP PBX Appliance

2 PSTN trunk FXO ports, 2 analog telephone FXS ports with life-line capability, Up to 2000 SIP endpoint and up to 50 SIP trunk accounts, Up to 200 concurrent calls with up to 32 conference attendees, Dual Gigabit network ports with integrated PoE; USB and SD ports; integrated NAT router with advanced QoS support, 128x32 backlit graphic LCD, Zero Configuration endpoint provisioning and no licensing fees UCM6102/6104

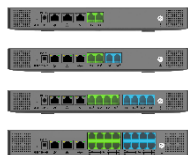


[Click Here For Datasheet](#)

HA100

An automated failover solution for the UCM6510

The HA100 is ideal for any business that requires an always-on, redundant voice system by providing an automatic failover solution when paired with two UCM6510 IP PBXs.



UCM6300 Series

Enterprise-Grade UC Solution (Upcoming Product)

This enterprise-grade IP PBX supports up to 5000 users, and up to 400 concurrent calls and allows businesses to unify all of their communication technologies on to one centralized network, including voice, video calling, video conferencing, video surveillance, data tools, analytics, mobility options, facility access, intercom and more.

Specifications	UCM6510	UCM6202	UCM6204	UCM6208
Gigabit Ports	2	2	2	2
PoE /USB / SD support	Yes	Yes	Yes	Yes
FXO ports	2	2	4	8
FXS ports	2	2	2	2
Asterisk Version	13	13	13	13
Registered SIP devices	2000	500	500	800
Concurrent VoIP Calls	200	30	45	100
Conference Bridges	8	3	3	6
Maximum Conference Attendees	64	25	25	32
DHCP Server Support	Yes	Yes	Yes	Yes
PBX Modes	Switched, dual network, or router	Switched, dual network, or router	Switched, dual network, or router	Switched, dual network, or router
T1/E1/J1 Interface	Yes	No	No	No



[Click Here For Datasheet](#)

GXW4104/4108

4/8 port FXO Gateway

4/8 ports, Integrated router with QoS capability, Multiple SIP profiles, Advanced security protection with SRTP, Auto-provisioning



[Click Here For Datasheet](#)

GXW4216/4224/4232/4248

16/24/32/48 port FXS Gateway

16/24/32/48 port models, Multiple SIP profiles, Advanced security protection with TLS/SRTP/HTTPS, Auto-provisioning, Gigabit network port, 128x32 backlit graphic LCD and multi-language



[Click Here For Datasheet](#)

GXW4500 Series

1/2/4 – E1/T1/J1 Gateway

The GXW4500 series are E1/T1 Digital VoIP Gateways that allow digital PSTN and ISDN trunks to be integrated with VoIP networks. By connecting the GXW4500 series with a VoIP network and a traditional PBX or E1/T1/J1 provider, businesses can drastically increase the amount of PSTN/ISDN trunks integrated with their VoIP network. The GXW4500 series offers three models that provide 1, 2 or 4 T1/E1/J1 spans and support 30, 60 or 120 concurrent calls to cater to the VoIP needs of large and medium sized enterprises.

Specifications		GXW4004/4008	GXW4104/4108	GXW4216/4224/4232/4248
Telephone Interfaces	FXS	4 / 8	N/A	16 / 24 / 32 / 48
	Telco 50-pins	N/A	N/A	1 (GXW4216/GXW4224) 2 (GXW4232/GXW4248)
	FXO	N/A	4 / 8	N/A
Network	10M/100M/1000M	2 (10M/100M)	2 (10M/100M)	1 (10M/100M/1000M)
Ports	Integrated Router	Yes	N/A	N/A
PSTN Failover Life-line Port		1	N/A	N/A
Short & Long Haul	REN	2	N/A	2
	With 24 AWG Lines	Up to 3,000 ft (1km)	N/A	Up to 6,000 ft (2km)
Voice & Fax Codecs		G.711, G.723.1, G.729A/B, G.726, iLBC, T.38		
Provisioning		Encrypted XML, TFTP/HTTP, Browser		
Telephony Features		Hold, Transfer, Forward, 3-Way Conference, Call Waiting (GXW40xx and GXW42xx only), DTMF via SIP INFO/RFC2833/In-Audio, Dial Plan, Hunt Group (GXW40xx and GXW42xx only)		
Caller ID		Bellcore Type 1 & 2, ETSI, BT, NTT and DTMF Based CID		
Polarity Reversal/Wink		Yes		
Universal Power Supply		12V, 1.5A	12V, 1A	12V, 5A (GXW4248: 24VDC, 6.25A)

NEW!



[Click Here For Datasheet](#)

HT813

1 FXS port and 1 FXO Port ATA

The HT813 is an analog telephone adapter that features 1 analog telephone FXS port and 1 PSTN line FXO port in order to offer backup lifeline support using a PSTN line. The integration of a FXO and FXS port enables this hybrid ATA to support remote calling to and from the PSTN line. For added flexibility, the FXS port extends VoIP service to one analog device. Users can convert their analog technology to VoIP thanks to the HT813's ultra-compact size, HD voice quality, advanced VoIP functionality, high-end security protection and multiple auto provisioning options.

HT801/802/HT812/HT814/HT818

IP PBX Appliance For Large Businesses

1 FXS port (HT801), 2 FXS port (HT802), 2 FXS ports (HT812), 4 FXS ports (HT814), 8 FXS ports (HT818), Integrated NAT Router – No/No/Yes/Yes/Yes, Call transfer, Call forward, call-waiting, hold, caller ID, flash, do not disturb, message waiting indication

HT801

HT802

HT812

HT814

HT818



WP810

Cordless Wi-Fi IP Phone (Upcoming Product)

The WP810 is a portable Wi-Fi IP phone designed to suit a variety of enterprises and vertical market applications, including retail, logistics, medical and security. This powerful, portable Wi-Fi phone comes equipped with integrated dual-band 802.11a/b/g/n/ac Wi-Fi support, an advanced antenna design and roaming support. By adding 6 hour talk time and HD voice with dual-MICs, the WP810 offers a powerful combination of features, mobility and durability to suit all portable telephony needs.



WP820

Portable Enterprise Wi-Fi Phone

This powerful portable Wi-Fi phone features dual-band 802.11a/b/g/n Wi-Fi, supports Wi-Fi roaming, and integrated Bluetooth. The combination of advanced telephony features and durability make it ideal for mobilizing your VoIP network in residences, warehouses, retail stores, hotels and many more environments. Due to a durable design, this sleek phone is drop safe from 1.5 meters, with 150 hour standby time and 7.5 hours talk time—making it an ideal addition for homes and businesses alike.



[Click Here For Datasheet](#)

WP850

Enterprise Portable Wi-Fi Phone (Upcoming Product)

The WP850 is a high-end portable Wi-Fi phone designed for users on the go who need access to reliable mobile scanning software. This powerful, portable Wi-Fi phone comes equipped with integrated dual-band 802.11a/b/g/n/ac Wi-Fi support, advanced antenna design and roaming support, and integrated Bluetooth for pairing with headsets and mobile devices. Excellent data scanning performance on 1D and 2D barcodes and NFC support for instant data communication, this device helps increase productivity with instant access to critical and real-time information.





[Click Here For Datasheet](#)

DP720

Dect Cordless IP Phone

Utilize mobility and call efficiency to increase the productivity throughout any communications network. The DP720 mobile DECT handset is the perfect solution for any business, warehouse, retail store or residential environment. It is supported by Grandstream's DP750 DECT VoIP base station.



[Click Here For Datasheet](#)

DP722

Dect Cordless IP Phone

The DP722 is a mid-tier DECT cordless IP phone that allows users to mobilize their VoIP network throughout any business, warehouse, retail store and residential environment.



[Click Here For Datasheet](#)

DP730

Dect Cordless IP Phone

The DP730 is a DECT cordless IP phone that allows users to mobilize their VoIP network throughout any business, warehouse, retail store and residential environment.



[Click Here For Datasheet](#)

DP750

DECT Base Station

Deploy an immersive DECT environment that allows users to communicate free from their desktop using Grandstream's DP720 DECT handsets. The DP750 pairs with up to 5 DP720s to create a powerful and mobile network solution.



[Click Here For Datasheet](#)

DP752

DECT VoIP base station

The DP752 is a powerful DECT VoIP base station that pairs with up to 5 of Grandstream's DP series DECT handsets to offer mobility to business and residential users.



[Click Here For Datasheet](#)

DP760

DECT repeater

The DP760 is a powerful wideband HD DECT repeater that auto associates with Grandstream's DP750 DECT Base Station to offer extended mobility to business and residential users



[Click Here For Datasheet](#)

GWN7000

Gigabit Router

Ideal for the enterprise, small-to-medium business, retail, education, hospitality and medical markets, the GWN7000 supports comprehensive WiFi and VPN solutions that can be shared across one or many different physical locations.



[Click Here For Datasheet](#)

GWN7600

Indoor Wireless Access Point

1.27Gbps wireless throughput and 2x Gigabit wireline ports, Dual-band 2x2:2 MU-MIMO with beam-forming technology, Support 802.3af Power-over-Ethernet (PoE), Support 450+ concurrent WiFi client devices

NEW!



[Click Here For Datasheet](#)

GWN7602

Indoor Wireless Access Point

The GWN7602 is a compact Wi-Fi access point designed for small businesses, homes, offices, hotels and more. It provides three 100Mb ports to provide IP phones, IPTV, computers and similar devices with ethernet while also providing an uplink Gigabit network port with PoE/PoE+.



[Click Here For Datasheet](#)

GWN7610

Indoor Wireless Access Point

Support for up to 16 SSIDs per radio and up to 250+ concurrent WiFi clients, Dual-band 3x3:3 MIMO technology and a sophisticated antenna design for maximum network throughput of up to 1.75Gbps and expanded coverage range of up to 175 meters

NEW!



[Click Here For Datasheet](#)

GWN7630

Indoor Wireless Access Point

It offers dual-band 4x4:4 MU-MIMO technology and a sophisticated antenna design for maximum network throughput and expanded Wi-Fi coverage range. 200+ concurrent clients per AP and dual Gigabit network ports with PoE/PoE+



[Click Here For Datasheet](#)

GWN7600LR

Outdoor Wireless Access Point

450+ WiFi clients, 30 AP embedded controller, Dual-band 2x2:2 MU-MIMO with beam-forming technology, 300-meter coverage range

NEW!



[Click Here For Datasheet](#)

GWN7630 LR

Indoor/Outdoor Wireless Access Point

The GWN7630LR is an outdoor long-range Wi-Fi access point for medium to large businesses and enterprises who need to provide long-range coverage in both indoor and outdoor spaces. It offers weatherproof casing and heat resistant technology, dual-band 4x4:4 MU-MIMO technology, and a sophisticated antenna design for maximum network throughput that supports 200+ clients and an expanded 300 meter coverage range.

GWN7605

Indoor Wireless Access Point (Upcoming Product)



The GWN7605 is an affordable 802.11ac Wave-2 Wi-Fi access point ideal for small to medium wireless network deployments with medium user density. It offers dual-band 2x2:2 MU-MIMO with beam-forming technology and a sophisticated antenna design for maximum network throughput and expanded Wi-Fi coverage range. To ensure easy installation and management, the GWN7605 uses a controller-less distributed network management design in which the controller is embedded within the product's web user interface.

GWN7615

Indoor Wireless Access Point (Upcoming Product)



The GWN7615 is an enterprise performance 802.11ac Wave-2 Wi-Fi access point to create scalability for medium to high user density environments. It offers dual-band 3x3:3 MU-MIMO technology and a sophisticated antenna design for maximum network throughput and expanded Wi-Fi coverage range. To ensure easy installation and management, the GWN7615 uses a controller-less distributed network management design in which the controller is embedded within the product's web user interface.

GWN.Cloud

Cloud Management



[Click Here For Datasheet](#)

GWN.Cloud is an enterprise-grade, management platform for Grandstream GWN series of WiFi access points. Thanks to streamlined monitoring and maintenance, managing your network across multiple locations has never been easier.



[Click Here For Datasheet](#)

GDS3710

HD IP Video Door Phone

Powerful video resolutions up to 1080p, Built-in RFID chip reader for keyless entry, SIP video streaming to NVRs, video intercom stations, IP phones, or smart phones simultaneously, Built with a metal casing to make it weatherproof and vandal resistant. Built-in hemispheric camera allows for 180-degree wall-to-wall coverage, Supports motion detection, Integrated PoE, Built-in microphone and speaker.

NEW!



[Click Here For Datasheet](#)

GDS3705

HD IP Voice Door Phone

HD Audio, 1.5m Mic, 3m Speaker Range, Integrated RFID card reader, PoE, Alarm In, Alarm Out

NEW!



[Click Here For Datasheet](#)

GSC3570

Indoor/Outdoor Wireless Access Point

A powerful control station, the GSC3570 provides users with a wall-mounted or desktop solution for door control, 2-way intercom, and facility-wide UC integration. The GSC3570 features a 7 inch, 1024x600 LCD touch screen and full duplex 2-way HD audio. For network connections, the device supports PoE through a 100Mbps network port, and Wi-Fi capabilities. This SIP intercom device is designed to seamlessly integrate with Grandstream's entire range of products, including our SIP door systems, security cameras, and intercom and paging devices. The GSC3570 provides users with streamlined access to facility communications and security systems.



[Click Here For Datasheet](#)

GXV3500

Video Encoder, Decoder and P.A.S. Device

The GXV3500 is an IP video encoder and decoder that uniquely features a built-in public announcement system to offer a 3-in-1 combination device. The device decodes IP video streams to analog video in order to allow IP cameras to be used on an analog network and encodes analog video to allow analog cameras to be used in an IP network.



[Click Here For Datasheet](#)

GXV3674 v2

HD IP Camera

A versatile selection for an outdoor setting where weather and light conditions are a concern, the GXV3674 v2 creates an easy to deploy, flexible security solution. The GXV3674 v2 also comes equipped with IR and a variable focus lens, allowing users to customize the device best to fit their monitoring needs. The GXV3674 v2 is perfect for monitoring entrances, parks, large courtyards, parking lots and everything in between.



[Click Here For Datasheet](#)

GXV3611 IR_HD

HD IP Camera

An innovative surveillance solution to not only monitor and secure a location but have an audio conversation gives users unprecedented control over their facilities. The GXV3611 IR_HD is an indoor camera with infrared capabilities that is perfect for indoor areas where low light may be a concern and 2-way communications is a must. Banks, retail stores and residential entry points all are potential deployments for the GXV3611 IR_HD.



[Click Here For Datasheet](#)

GXV3610 v2 series

HD IP Camera

A weatherproof, infrared IP camera that enables users to monitor and secure important low-light outdoor environments. The GXV3610 v2 comes with a 3.6mm lens for monitoring wide angles at close proximity settings, such as building entrances, outdoor warehouses, parking garages and outdoor reception areas.



[Click Here For Datasheet](#)

GVC3200

Video Conferencing

This SIP-based GVC3200 allows the user to connect their video conferencing solutions with any 3rd party SIP or H.323 video conferencing platform. Additionally, its built-in MCU bridges multiple platforms such as Skype, Google Hangouts and many others. .



[Click Here For Datasheet](#)

GVC3202

Video Conferencing

The GVC3202 is a revolutionary video conferencing system that supports an interactive and immersive video conferencing environment to increase meeting collaboration and productivity. The SIP-based GVC3202 is compatible with any 3rd party SIP-based or H.323 video conferencing platform.

NEW!



[Click Here For Datasheet](#)

GVC3210

Video Conferencing with Endpoint

The GVC3210 is an innovative video conferencing endpoint ideal for small to medium businesses who seek an easy-to-use yet potent video conferencing solution. By supporting top-tier video resolutions up to 4K Ultra HD, the GVC3210 turns any video conference into a powerful, clear, enhancing experience, Built-in Bluetooth for use with Bluetooth speakers/ microphones, keyboards, data exchange, Advanced camera with 16M pixel CMOS sensor, 90 FOV wideangle lens and ePTZ for easy camera view adjustments, Integrated 1x HDMI in, 2x HDMI out, and 2x USB



[Click Here For Datasheet](#)

GAC2500

Audio Conferencing

6 lines, 6 SIP accounts, 7-way voice conferencing, Runs Android 4.4 and offers full access to the Google Play Store and all Android apps, such as Skype, Google Hangouts and more, Bluetooth to support syncing of headsets and mobile devices, Built-in 7-way conference bridge, Auto-sensing Gigabit port, built-in PoE support.



[Click Here For Datasheet](#)

IPVideoTalk

IPVideoTalk

IPVideoTalk is Grandstream's video, audio and web conferencing platform. This robust platform offers web-based meeting plans, including a free plan that supports 3 person meetings, for computer and mobile. IPVideoTalk is also with room-based plans for users of Grandstream's GVC series of Video Conferencing Systems.

NEW!



[Click Here For Datasheet](#)

IPVT10

Enterprise Video Conferencing Server

IPVT10 is an on-premise server designed to support the collaboration needs of modern enterprises. It offers a state-of-the-art collaboration platform complete with rich video and audio collaboration features to provide a centralized, scalable solution to manage an entire businesses' conferencing needs, Support for up to 300 participants and 120 video feeds per session; up to 10 simultaneous sessions, Video and audio recording with 500GB local storage



[Click Here For Datasheet](#)

GSC3510

SIP Intercom Speaker/Microphone

The GSC3510 is a SIP intercom speaker and microphone that allows offices, schools, hospitals, apartments and more to build powerful voice intercom solutions that expand security and communication. This robust SIP intercom device offers 2-way voice functionality with both a high-fidelity 8W HD speaker and 3 directional microphones with Multichannel Microphone Array Design (MMAD) that offer a 4.2 meter pickup distance. The GSC3510 supports a wide-range of peripherals including Bluetooth devices, built-in whitelist and blacklists to easily block unwanted calls, integrated dual-band WiFi and advanced acoustic echo cancellation. By pairing the GSC3510 with other Grandstream devices, including desktop and cordless IP phones as well as the GDS series of Facility Access products, users can easily sculpt a state-of-the-art security and voice intercom solution. Thanks to its modern industrial design and rich features, the GSC3510 is the ideal intercom speaker/microphone for any setting.



[Click Here For Datasheet](#)

GSC3505

1-Way Public Address SIP Speaker

The GSC3505 is a 1-way public address SIP speaker that allows offices, schools, hospitals, apartments and more to build powerful public address announcement solutions that expands security and communication.

This robust SIP speaker offers crystal clear HD audio functionality with a high-fidelity 8W HD speaker. The GSC3505 supports Bluetooth devices, a built-in whitelist and blacklists to easily block unwanted calls, SIP and multicast paging, and integrated dual-band WiFi. By pairing the GSC3505 with other Grandstream devices, including desktop and cordless IP phones as well as the GDS series of Facility Access products, users can easily sculpt a state-of-the-art security and PA announcement solution. Thanks to its modern industrial design and rich features, the GSC3505 is the ideal SIP speaker for any setting.



Cohesive Technologies come across as the most flexible team to design a Contact Centre Solution .We are very happy with the performance of the product & wish the very best to Cohesive Technologies for future endeavours.

Bhavneet Kaur (Sr. Product Manager)



Cohesive Technology not only understood our Requirements but did Acted as a solution architect & suggested us to integrate Help desk with Back office Solution. Their Knowledge not only on VoIP but also on TDM helped us integrate the Legacy Trunks with Contact Centre (Cradle) & State of Art IPPBX (Grand stream).

Rajesh Loomba (MD Eco Rent a Car)



Esteemed Customers

Real Estate & Enterprise

Education & Healthcare

BFSI

E-Commerce

Manufacturing Units



*Grandstream Video Phones GXV3275 in all 2800 Flats Configured on Unified Communication server of Grandstream (UCM6510*2) connected to SIP Surveillance and SIP Door Phones on one Converged Platform by Cohesive Technologies helped us achieve the State of art technology with 3 Tier Security to all our Residents with Voice /Video and Mobility benefits.*

Mr.Sunil Totlani (Director ABA Corp)



"Cohesive Technologies gave us solutions post understanding our requirements & optimising our existing infrastructure ,they not only helped us the extensive Contact solutions integrating it with our TDM Nortel but also helped us with SIP PBX at Medanta Clinic & integrating it with Medanta Gurgaon."

Mr. Harmandeep
(Infrastructure Head, Medanta the Medicity)



Cohesive Technologies Pvt. Ltd.

Corporate Office: CS - 4, 5 & 6, 4th Floor, Ansal Plaza, Sector 3, Vaishali, Ghaziabad (U.P.) - 201010, India. Contact No: + 91 120 4830000, +91 7290000544
Registered Office: 454, F.I.E, 2nd Floor, Patpargunj Industrial Area, New Delhi - 110092, India
 Email: info@cohtechnologies.com, info@grandstreamindia.com
 Web: www.cohesiveglobal.com, www.grandstreamindia.com

