

New hassle-free smart control panel for your home

The akubela HyPanel, a smart control panel with an Android 10 operating system. The ALL IN ONE design integrates smart intercom, ZigBee gateway and home automation, and is compatible with plentiful ecosystems. Multi-modal interaction can be easily used by the whole family, offering the excellent smart home experience.

At a Glance

- Excellent performance with Android 10 system
- 4" multi-touch screen with energy saving mode
- Smart intercom, ZigBee gateway, home automation ALL IN ONE
- Kinds of sensors built-in
- Standard flush mounted box
- Built in with a 2-gang switch and a digital input port



Basic Information

- Model Number: PS51-KNX-EU
- Power Supply: KNX 21~30VDC
AUX 21~30VDC
- I/O Port: 0~5VDC Digital input x1
100~240VAC relay x2
- Operation System: Android 10
- RAM/ROM: 1GB/8GB
- Wi-Fi: IEEE802.11 b/g/n, @2.4GHz/5GHz
- Bluetooth: Bluetooth 4.2
- Ethernet Port: 1×RJ45, 10/100Mbps adaptive
- ZigBee: ZigBee 3.0
- Microphone: Dual microphones, -42dBV
- Speaker: Single speaker, 8Ω/1.5W

Appearance

- Material: V0 fireproof PC
- Screen: 4" multi-touch screen
- Screen Resolution: 480×480 pixels
- Screen Brightness: 210 cd/m²

Sensors Built In

- Proximity Sensor: 30 ~ 60cm
- Light Sensor: Low-level lux detection
- Temperature Sensor: ±1°C, range: -10 ~ 55°C
- Humidity Sensor: ±5%, range: 10 ~ 90%RH, without condensation

Working Environment

- Environment: For indoor use only
- Working Humidity: 10 ~ 90%RH, without condensation
- Working Temperature: -10 ~ 55°C
- Storage Temperature: -20 ~ 65°C

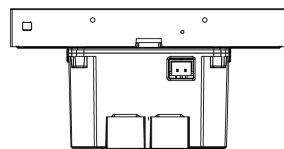
Installation

- Installation: Wall flush mounting
- Flush Mounted Module: EU/UK standard

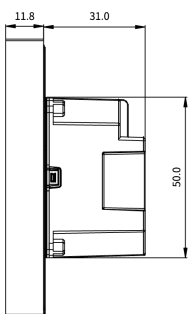
Application Scenario

- Villas
- Apartment complexes
- Home automation systems
- Modern interiors

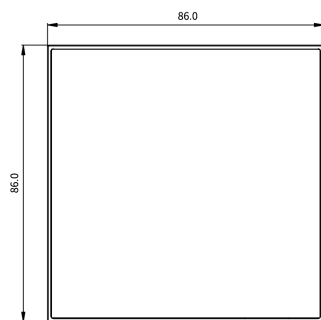
Product Dimension Diagram (mm)



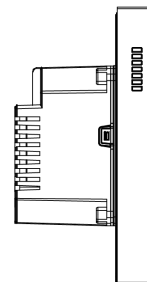
⑤ BOTTOM VIEW



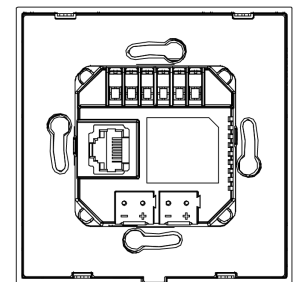
② RIGHT VIEW



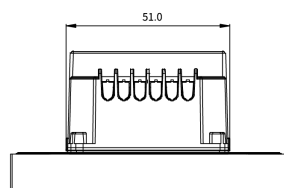
① FRONT VIEW



③ LEFT VIEW



④ BACK VIEW



⑥ TOP VIEW