



WI-PS305G
6-Port 48V Gigabit Ports PoE Switch
with 4-Port PoE
Data sheet

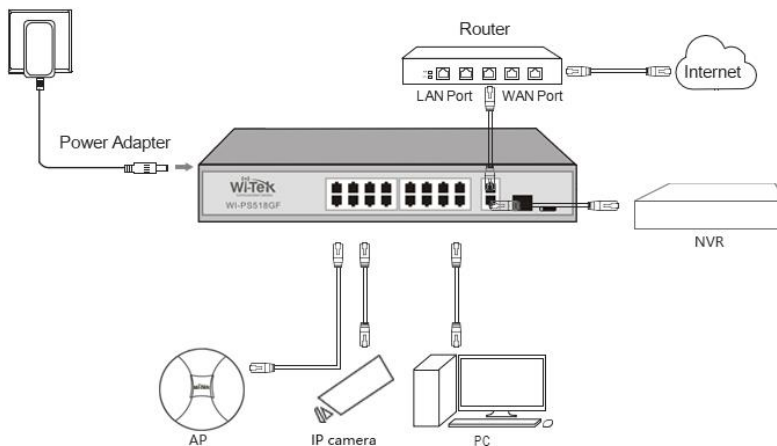
Highlights

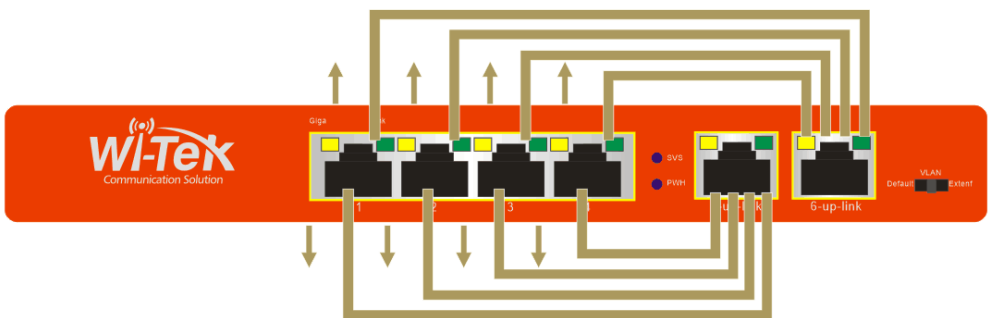
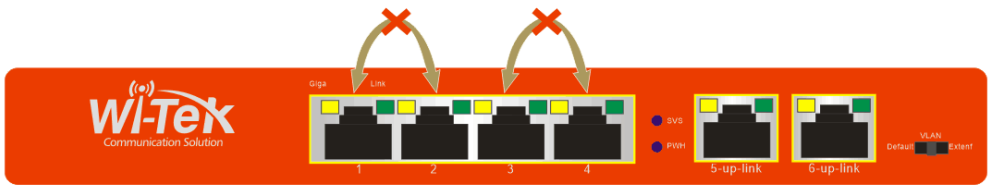
- 6 Gigabit Ports PoE Switch with 4-Port PoE ports
- Support Smart PoE Watchdog function
- Port 1 supports 802.3bt 60W Hi PoE
- Supports 250meters Long-Range PoE transmit
- Supports PoE power up to 30W for Port 2-8
- Supports PoE IEEE 802.3af/at/bt compliant PDs
- Internal power adapter supply 65W output power
- Support Port VLAN(Port isolation)
- LED indicators for LINK/ACT, Power, PoE Status, 100/1000Mbps
- 2K entry MAC address table with auto-learning and auto-aging

Product

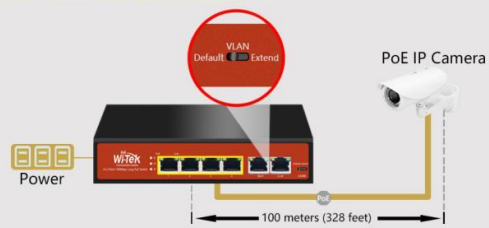


Typical Applications

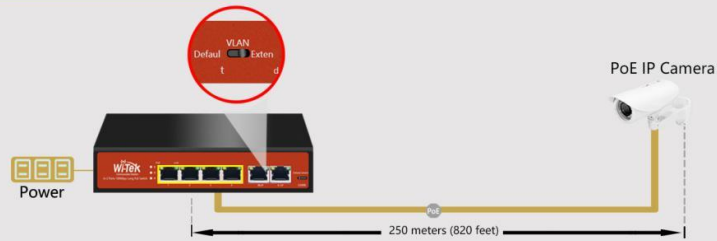




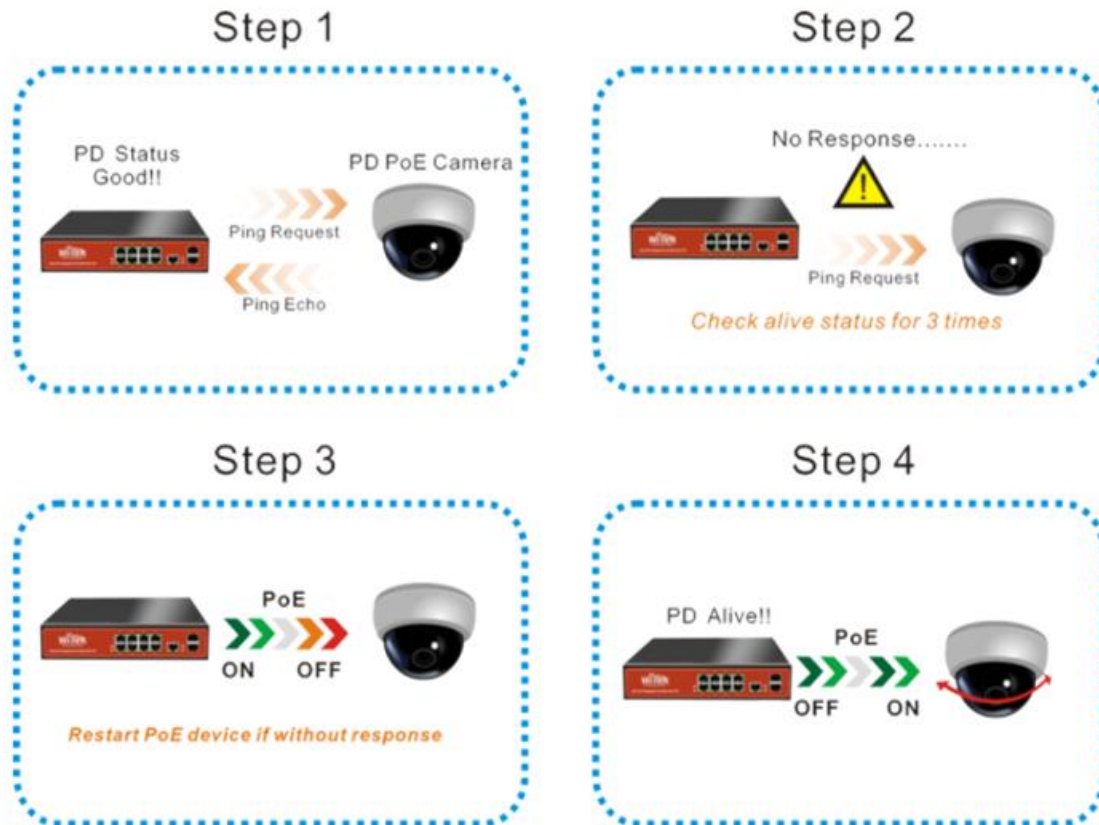
Standard PoE Mode



Extend PoE Mode



Monitors compliant PD with smart watchdog function.



Description

What This Product Does

6-Port Gigabit Switch with 4-Port PoE provides the seamless network connection. It integrates 1000Mbps Gigabit Ethernet and 10/100Mbps Fast Ethernet network capabilities.

How This Product Works

4 of the 6 Auto-Negotiation RJ45 ports (port-1 to port-4) of the switch support Power over Ethernet (PoE) function. These PoE ports can automatically detect and supply power with those IEEE 802.3af/at compliant Powered Devices (PDs). In this situation,

the electrical power is transmitted along with data in one single cable allowing you to expand your network where there are no power lines or outlets, where you wish to fix devices such as APs, IP Cameras or IP Phones, etc.

Easy To Use

WI-PS305G is easy to install and use. It requires no configuration and installation. With outstanding performance and quality, the WI-PS305G 6-Port Gigabit Desktop Switch with 4-Port PoE is a great selection for expanding your home or office network.

Specifications

HARDWARE FEATURES	
Interface	6 1000M RJ45 ports
Network Media	10Base-T: Pair 2 Category 3(cat 3) and above UTP/STP(≤100m) 100Base-TX: Pair 2 Category 5(cat 5) and above UTP/STP(≤100m) 1000BASE-TX: 6 Category and above UTP(≤150m)
Fan Quantity	Fanless
Power Budget	65W
Internal Power Supply	AC 110~240V 50/60HZ

HARDWARE FEATURES

PoE Ports (RJ45)	Standard: 802.3 af/at/bt compliant PoE Ports: Port1- Port4 Power Supply: 65W
Exchange Capacity	12G
Mac Address Table	2K
Packet Forwarding Rate	7.5Mpps
Buffer	1Mb
Jumbo Frame	10240Bytes
Dimensions	Product Size: 190mm*130mm*35mm (L*W*H)
Protection Leve	Lightning protection 6KV 6KV ESD Contact discharge

SOFTWARE FEATURES

Transmission Method	Store-And-Forward
----------------------------	-------------------

SOFTWARE FEATURES

Advanced Functions

Priority Function
 Mac Address Auto-Learning
 And Auto-Aging
 Store and forward
 IEEE 802.3x flow control for
 Full-duplex Mode
 Backpressure for Half-duplex
 Mode

OTHERS

Certification

CE, FCC, RoHS

Package Contents

POE Switch
 Electric Line
 Guide Book/Warranty Card

Environment

Working Temperature:
 -10°C ~ 55°C
 Storage temperature :
 -40°C ~ 70°C
 Working Humidity :
 10% ~ 90% RH
 non-condensing
 Storage Hum idity:
 5% ~ 90% RH non-
 condensing