

# Milesight VMS Enterprise

Live View • Playback • Smart Analysis

OS: Windows 10/8/7,  
Windows Server 2019/2016/2012/2008



## INTRODUCTION

Milesight VMS Enterprise (ONVIF compliant) is a video management software designed for medium to large projects which can manage lots of network cameras in different locations and featured with Client/Server architecture. It maintains easy usability as well as great functionality. Live view, Playback, E-map, intelligent alarm, smart ANPR, all are there for free trial.

## QUOTATION

## KEY FEATURES

- ▶ Support up to 2000 channels per system/128 channels per server/25 servers per system (The numbers given are recommended maximum.)
- ▶ Support up to 4 monitors and 64 live view channels per monitor with main or sub streams optional
- ▶ Support self-adaptive layout
- ▶ Support up to 64 channels synchronous or asynchronous playback
- ▶ Support quick locating & playback by tags, events
- ▶ Support split playback (Split one video into multiple clips and play them back simultaneously.)
- ▶ Support multiple kinds of overlays for exported videos
- ▶ Support local and NAS storage
- ▶ Support account management (Flexible customization of the privilege of the roles.)
- ▶ Friendly GUI for easy operation

Alarm can be triggered in real time by various events including VCA, multiple alarm actions can be enabled at the same time.

### VCA



Region Entrance



Region Exiting



Advanced Motion Detection



Tamper Detection



People Counting



Line Crossing



Loitering



Human Detection



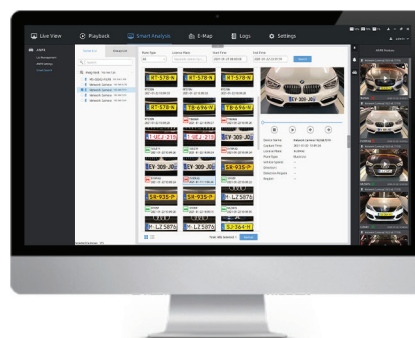
Object Left



Object Removed



Support Fisheye Dewarping in both  
live view and playback



Support smart analysis like ANPR  
(black/white list detection and smart search)

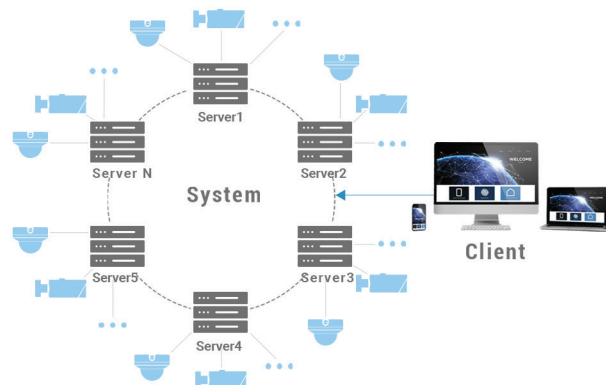


## SPECIFICATION

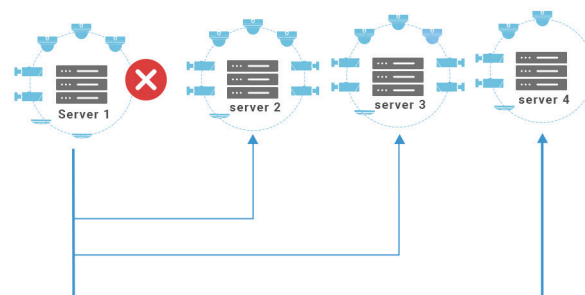
<b>Live View</b>	Simultaneously Playing	Up to 64-CH, self-adaptive layout
	Multi-monitor	Up to 4 Monitors
	Tour	Support
	Function	Snapshot, Record, Audio, Talk, Digital Zoom, Fisheye Dewarping, PTZ Control, Stream Switching, Instant Playback
<b>Device Management</b>	Channel	Support up to 2000 channels per system/128 channels per server (The numbers given are recommended maximum.)
	Protocol	MSSP/ONVIF/RTSP/MSP2P
<b>Video/Audio Compression</b>	Video Compression	H.265/H.264
	Audio Compression	G.711 U-Law/G.711 A-Law/AAC LC/G.722/G.726
	Video Resolution	12MP/9MP/8MP/6MP/5MP/4MP/3MP/1080P UXGA/720P/D1/VGA/CIF/QCIF
<b>Playback and Recording Management</b>	Playback Channel	Up to 64-CH synchronous or asynchronous playback
	Recording Type	Schedule/Event
	Playback Type	Schedule/Event/Tag
	Export Type	.mp4/.avi/.mkv/.asf/.gif/.exe (The .exe file has a built-in player.)
	Export Overlays	Text/Timestamp/Image/Privacy Mask/Transcoding
	Function	Snapshot, Audio, Digital Zoom, 1/32x~32x Slower/Faster Play Speed, Rewind Play, Fisheye Dewarping, Split Playback, Lock
<b>Alarm</b>	Alarm Type	External Alarm, Video Loss, Motion, Tampering, VCA Events, HDD Events, ANPR, Failover etc.
	Alarm Action	Emergency Recording, PTZ Movement, Email, Pop up Video, Play Sound etc.



## ARCHITECTURE

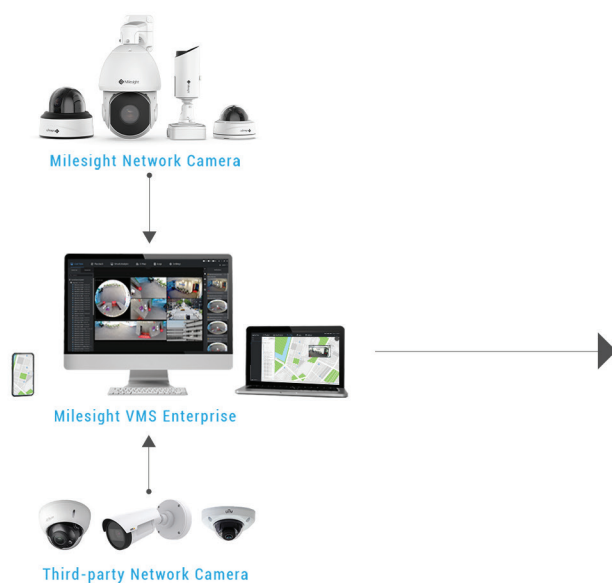


One system manages several servers. Every server shares the same data file.

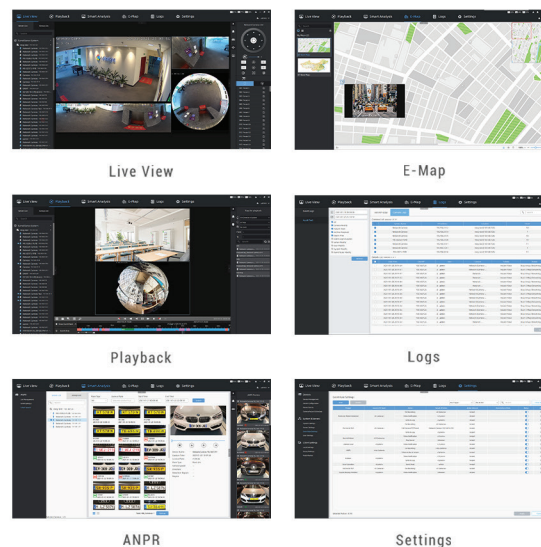


Any functioning server with failover function on and valid licenses will take over the cameras of the failed server. The cameras with record on will keep recording.

## CENTRAL MANAGEMENT SYSTEM



### Key Functions



## MANAGE ANYTIME WITH M-VMS MOBILE



M-VMS Beta (Android)

### Live View

- PTZ
- Two-Way Audio
- Client Trigger Alarm

### Playback

- Times the Speed of Playback
- 4-CH Synchronous or Asynchronous Playback
- Playback by Events & Split Playback

### Receive Event Messages from Milesight VMS Enterprise