

Unified Communications & Networking Solutions

2026 Product Brochure

Table of Contents

UC + Networking Convergence

Router + IP PBX + Next-Gen Firewall + Network Switch or Wi-Fi AP..... 3

Networking

Indoor Wi-Fi Access Points 3
Long-Range Weatherproof Wi-Fi Access Points and Routers 4
Network Switches..... 5

Unified Communications

IP Voice & Video Phones, PoE Injectors 6
IP PBX Solutions..... 10
Business Conferencing, ATAs, Gateways, and Facility Management..... 11



Grandstream Device Management System

GDMS is a free zero-touch cloud provisioning and management system that provides easy-to-use enterprise-level tools to manage all Grandstream products before, during and after deployment. GDMS offers a centralized interface to provision, manage, monitor and troubleshoot Grandstream products individually or in batches, including device management, account management, device configuration, firmware upgrades, device monitoring, intelligent alarms, and statistical analysis. Visit gdms.cloud to sign up for free.





GCC6010 Series

- 3 Models: GCC6010, GCC6010W & GCC6011
- Router + IP PBX + Next-Gen Firewall + Network Switch/Wi-Fi Access Point
- IP PBX supports up to 50 users and 12 concurrent calls (with upgrade option)
- VPN Router supports 2.5Gbps (GCC6010 & GCC6011) and 3Gbps (GCC6010W)
- Dual-band Wi-Fi 6 AP (GCC6010W)
- Next-Gen Firewall provides anti-virus, layer 3-7 IDS/IPS, DPI, SSL detection, and more
- 5x Gigabit ports (4 PoE output ports), 2x SFP ports (GCC6010), 5 Gigabit ports (GCC6010W), 10x Gigabit ports (4 PoE output ports), 2x SFP ports (GCC6011).



GCC6020 Series

- 2 models: GCC6020 & GCC6021
- Router + IP PBX + Next-Gen Firewall + Network Switch
- IP PBX supports up to 200 users and 48 concurrent calls
- VPN Router supports 6.5Gbps (GCC6020) and 10Gbps (GCC6021)
- Next-Gen Firewall provides provides anti-virus, layer 3-7 IDS/IPS, DPI, SSL detection, and more
- 1x 10 Gigabit SFP+ ports , 1x 2.5 Gigabit and 4x Gigabit Ethernet ports (GCC6020)
- 4x 10 Gigabit SFP+ ports , 8x 2.5 Gigabit and 16x Gigabit Ethernet ports (GCC6021)

Networking Indoor Wi-Fi Access Points



GWN7674

- High-Performance Tri-band 2x2:2 MU-MIMO (2.4G) and 4x4:4 MU-MIMO (5G & 6G) Wi-Fi 7
- 21Gbps wireless throughput
- 175-meter coverage range
- Supports 768 devices
- Bluetooth Low Energy (BLE) 5.3



GWN7672

- Tri-band 2x2:2 MU-MIMO Wi-Fi 7
- 11Gbps wireless throughput
- 175-meter coverage range
- Supports 384+ devices
- Bluetooth Low Energy (BLE) 5.3



GWN7670

- Dual-band 2x2:2 MU-MIMO Wi-Fi 7
- 3.6Gbps wireless throughput
- 175-meter coverage range
- Supports 256 devices
- Bluetooth Low Energy (BLE) 5.3



GWN7670E

- Dual-band 2x2:2 (2.4G) and 3x3:2 (5G) MU-MIMO Wi-Fi 7
- 3.6Gbps wireless throughput
- 175-meter coverage range
- Supports 256 devices



GWN7670WM

- Dual-band 2x2:2 MU-MIMO Wi-Fi 7
- 3.6Gbps wireless throughput
- 175-meter coverage range
- Supports 384+ devices
- Bluetooth Low Energy (BLE) 5.3



GWN7665

- Tri-band 2x2:2 MU-MIMO Wi-Fi 6E
- 5.4Gbps wireless throughput
- 175-meter coverage range
- Supports 384+ devices
- Bluetooth Low Energy (BLE) 5.2



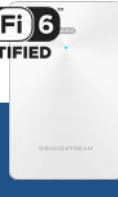
GWN7664E

- Dual-band 4x4:4 MU-MIMO AX600 Wi-Fi 6
- 6Gbps wireless throughput
- 175-meter coverage range
- Supports 512 devices



GWN7662

- Dual-band 2x2:2 2.4GHz and 4x4:4 5GHz MU-MIMO Wi-Fi 6
- 5.38Gbps wireless throughput
- 175-meter coverage range
- Supports up to 256 devices



GWN7661E

- In-Wall Access Point
- Dual-band 2x2:2 MU-MIMO Wi-Fi 6
- 1.77Gbps wireless throughput
- 100-meter coverage range
- Supports up to 500 devices



GWN7660E

- Dual-band 2x2:2 2.4GHz and 4x4:4 5GHz MU-MIMO Wi-Fi 6
- 3 Gbps wireless throughput
- 175-meter coverage range
- Supports up to 256 devices



GWN7630

- Dual-band 4x4:4 MU-MIMO Wi-Fi 5
- 2.33Gbps wireless throughput
- 175-meter coverage range
- Supports up to 200 devices

GWN7625

- Dual-band 2x2:2 2.4GHz and 4x4:4 5GHz MU-MIMO Wi-Fi 5
- 2.03Gbps wireless throughput
- 165-meter coverage range
- Supports up to 200 devices

GWN7624

- In-Wall Wi-Fi Access Point
- Dual-band 2x2:2 2.4GHz MU-MIMO, 4x4:4 5GHz
- 2.03Gbps wireless throughput
- Supports up to 200 devices

GWN7615

- Dual-band 3x3:3 MU-MIMO Wi-Fi 5
- 1.75Gbps wireless throughput
- 175-meter coverage range
- Supports 200+ devices

GWN7605

- Dual-band 2x2:2 MU-MIMO Wi-Fi 5
- 1.27Gbps wireless throughput
- 165-meter coverage range
- Supports 100+ devices

GWN7604

- Compact Wi-Fi 6 AP
- Dual-band 2.4G 2x2:2, 5G 3x3:2 MU-MIMO Wi-Fi 6
- Integrated 4x Gigabit ports
- 3Gbps wireless throughput
- 100-meter coverage range
- Supports up to 256 devices

GWN7603

- Compact Wi-Fi 5 AP
- Dual-band 2x2:2 MU-MIMO Wi-Fi 5
- 1x Gigabit + 3x 100Mbps ports
- 1.27Gbps wireless throughput
- 100-meter coverage range
- Supports up to 100 devices

GWN7660EM

- Compact Wi-Fi 6 AP and Extender
- Built with a wall plug-in design
- Dual-band 2x2:2 MU-MIMO (2.4G) and 3x3:2 MU-MIMO (5G)
- 3Gbps Wireless throughput
- Supports MESH networking
- 120-meter coverage range
- Supports up to 128 devices

GWN7302

- Supports PtP and PtMP modes to meet different scenarios
- Single-band 2x2:2 MIMO Wi-Fi 6
- 2.4G Aggregate wireless throughput, 2x1 Gigabit Ethernet Port
- Up to 5-kilometer coverage range
- IP66-level weatherproof capability

Long-Range Weatherproof Wi-Fi Access Points

GWN7670LR

- Dual-band 2x2:2 MU-MIMO Wi-Fi 7
- 3.6Gbps wireless throughput
- 2.5Gbps + 2.5Gbps SFP ports
- Supports 256 devices
- 2 detachable antennas + internal antennas
- Bluetooth Low Energy (BLE) 5.3

GWN7664ELR

- Dual-band 4x4:4 MU-MIMO Wi-Fi 6
- 6Gbps wireless throughput, 2.5 Gbps RJ45, and 2.5 Gbps SFP wireline ports
- 300m coverage range
- Supports 512 devices
- 8 internal antennas

GWN7660ELR

- Dual-band 2x2:2 MU-MIMO Wi-Fi 6
- 3Gbps wireless throughput, 1 Gbps RJ45, and 2.5 Gbps SFP wireline ports
- 300m coverage range
- Supports 256+ devices
- 5 internal antennas

GWN7630LR

- 802.11ac Dual-band 4x4:4 MU-MIMO Wi-Fi 5
- 2.5Gbps wireless throughput, 2x Gigabit wireline ports
- 300m coverage range
- Supports 250+ devices
- 4 detachable antennas

GWN7605LR

- 802.11ac Dual-band 2x2:2 MU-MIMO Wi-Fi 5
- 1.27Gbps wireless throughput, 2x Gigabit wireline ports
- 250m coverage range
- Supports 100+ devices
- 2 detachable antennas

GWN7605CLR

- 802.11ac Dual-band 2x2:2 MU-MIMO Wi-Fi 5 AP with phoenix connector
- 1.27Gbps wireless throughput, 2x Gigabit wireline ports
- 150m coverage range
- Supports 100+ devices
- 2 internal antennas

Wi-Fi and Wired Routers

GWN7062M

- Wi-Fi 6 Router
- 3Gbps wireless throughput
- Dual-band 2x2:2 MU-MIMO (2.4G) and 3x3:2 MU-MIMO (5G)
- Built-in VPN support
- Supports up to 256 devices
- Rich firewall features
- Supports Mesh Networking
- Pairs with Grandstream Home App

GWN7062E/GWN7062ET

- Wi-Fi 6 Router
- 3Gbps wireless throughput
- Dual-band 2.4G 2x2:2 and 5G 3x3:2 MU-MIMO with XTRA Range
- Built-in VPN support
- Supports up to 128 devices
- 3x Gigabit Ethernet ports, 2x RJ11 Ports (GWN7062ET only)
- Pairs with Grandstream Home App

Grandstream Home App

- Mobile Platforms Supported: Android 8.0+, iOS 13+
- Router models supported: GWN7062E, GWN7062ET, and GWN7062M
- Quick and easy setup
- Remote Management
- Complete Network Control
- Powerful Network Security





GWN7001

- Wired Router
- 6x Gigabit Ethernet ports
- Built-in VPN support
- 2.2Gbps NAT throughput
- Manage up to 100 GWN Access Points



GWN7002

- Wired Router
- 4x Gigabit Ethernet ports
- 2x 2.5 Gigabit SFP ports
- Built-in VPN support
- 2.2Gbps NAT throughput
- Manage up to 100 GWN Access Points



GWN7003

- Wired Router
- 9x Gigabit Ethernet ports
- 2x 2.5 Gigabit SFP ports
- Built-in VPN support
- 2.2Gbps NAT throughput
- Manage up to 150 GWN Access Points

Network Switches



Aggregation

- GWN7830, GWN7831, GWN7832
- 2/4 Gigabit Ethernet ports, 6/24 Gigabit SFP ports, and 4/12 10Gigabit SFP+ ports
- Supports deployment in IPv6 and IPv4 networks



Layer 3 Multi-Gigabit

- GWN7821P, GWN7822P
- 8 /24 Gigabit Ethernet ports and 2/4 Gigabit SFP+ ports
- Smart power control to support dynamic PoE/PoE+
- Supports deployment in IPv6 and IPv4 networks



Layer 3

- GWN7811(P), GWN7812P, GWN7813P, GWN7816(P)
- 8/16/24/48 Gigabit Ethernet ports and 2/4/6/10 Gigabit SFP+ ports
- Smart power control to support dynamic PoE/PoE+ power allocation
- Supports deployment in IPv6 and IPv4 networks



Layer 2++

- GWN7801P Pro, GWN7802P Pro, GWN7803 Pro, GWN7803PL Pro, GWN7803PH Pro, GWN7806PL Pro, GWN7806PH Pro
- 8/16/24/48 Gigabit Ethernet ports and 2 SFP, 2SFP+, or 6SFP+ ports
- Smart power control to support dynamic PoE/PoE+/PoE++ (on select models)
- Supports deployment in IPv6 and IPv4 networks



Layer 2+

- GWN7801(P), GWN7802(P), GWN7803(P), GWN7806(P)
- 8/16/24/48 Gigabit Ethernet ports and 2/4/6 Gigabit SFP+ ports
- Smart power control to support dynamic PoE/PoE+ power allocation
- Supports deployment in IPv6 and IPv4 networks



Layer 2 Lite Managed

- GWN7721(P), GWN7711(P), GWN7710R
- GWN7721(P): 8 2.5G ports, 2 10G SFP+ ports, 8 port PoE/PoE+ output (GWN7721P)
- GWN7711(P): 8 Gigabit ports, 4 port PoE/PoE+ output (GWN7711P)
- GWN7710R: IP66-rated waterproof and dustproof, 5 Gigabit ports, 4 PoE/PoE+/PoE++ output, 1 PoE input
- Smart power control to support dynamic PoE power allocation (GWN7721P, GWN7711P, and GWN7710R)
- Supports deployment in IPv6 and IPv4 networks



Unmanaged

- GWN7700(P), GWN7701(P/PA), GWN7702(P), GWN7703, GWN7706
- 5/8/16/24/48 Gigabit ports, 4 port PoE+ output (GWN7700P & GWN7701P), 8 port PoE+ output (GWN7701PA & GWN7702P)
- 802.3 af/at compliant up to 30W on each port, (GWN7700P/GWN7701P, GWN7701PA/GWN7702P only)



Unmanaged 2.5G Multi-Gigabit

- GWN7700M, GWN7700MP, GWN7701M
- 5 and 8 Multi-Gigabit Copper Ports provide 100/1000/2500Mbps connectivity
- 1 SFP+ Port with 1 Gigabit or 10-Gigabit connectivity



Unified Communications - IP Voice & Video Phones

GRP Series Carrier-Grade IP Phones



GRP2601(P/W)

- 2 SIP accounts, 2 lines
- GRP2601P includes built-in PoE
- GRP2601W includes 2.4 GHz Wi-Fi support
- Swappable faceplates



GRP2602(P/W/G)

- 4 SIP accounts, 2 lines
- GRP2602P (10/100 Mbps) & GRP2602G (10/100/1000 Mbps) includes built-in PoE
- GRP2602W includes built-in dual-band Wi-Fi support
- Swappable faceplates



GRP2603(P)

- 6 SIP accounts, 3 lines
- GRP2603P includes built-in PoE
- Swappable faceplates



GRP2604(P)

- 6 SIP accounts, 3 lines
- GRP2604P includes built-in PoE
- Swappable faceplates



GRP2610(P)

- 2 SIP accounts, 2 lines
- Built in PoE on GRP2610P
- Swappable faceplates



GRP2611G

- 3 SIP accounts, 3 lines
- Dual switched auto-sensing 10/100/1000 Mbps Gigabit ethernet ports with integrated PoE
- Swappable faceplates



GRP2612(P/W/G)

- 4 SIP accounts, 4 lines
- Built in PoE on GRP2612, GRP2612P, GRP2612W (10/100 Mbps) & GRP2612G (10/100/1000 Mbps)
- GRP2612W includes built-in dual-band Wi-Fi support
- Swappable faceplates



GRP2613(W)

- 4 SIP accounts (GRP2613), 6 SIP accounts (GRP2313W), 6 lines
- Includes built in 10/100/1000 Mbps Gigabit ethernet ports
- Swappable faceplates
- GRP2613W includes built in dual-band Wi-Fi 6 support and Bluetooth ®



GRP2614

- 4 SIP accounts, 4 lines
- Includes built in 10/100/1000 Mbps Gigabit ethernet ports
- Swappable faceplates



GRP2615

- 5 SIP accounts, 10 lines
- Integrated dual-band Wi-Fi 802.11ac (2.4Ghz & 5Ghz)
- Includes built-in PoE
- Swappable faceplates
- Compatible with GBX20 Extension Module



GRP2616

- 6 SIP accounts, 6 lines
- Integrated dual-band Wi-Fi 802.11ac (2.4Ghz & 5Ghz)
- Includes built-in PoE
- Swappable faceplates



GRP2624

- 6 SIP accounts, 8 lines
- Integrated dual-band Wi-Fi 802.11ac (2.4Ghz & 5Ghz)
- Includes built-in PoE
- Swappable faceplates
- Compatible with GBX20 Extension Module



GRP2634

- 6 SIP accounts, 8 lines
- Integrated dual-band Wi-Fi 802.11ac (2.4Ghz & 5Ghz)
- Includes built-in PoE
- Swappable faceplates



GRP2636

- 6 SIP accounts, 12 lines
- Integrated dual-band Wi-Fi 802.11ac (2.4Ghz & 5Ghz)
- Includes built-in PoE
- Swappable faceplates



GRP2650

- 6 SIP accounts, 14 lines
- Integrated dual-band Wi-Fi 802.11ac (2.4Ghz & 5Ghz)
- Includes built-in PoE
- Swappable faceplates
- Compatible with GBX20 Extension Module



GRP2670

- 6 SIP accounts, 12 lines
- Integrated dual-band Wi-Fi 802.11ac (2.4Ghz & 5Ghz)
- Includes built-in PoE
- Swappable faceplates
- Compatible with GBX20 Extension Module





GXP1610(P)/GXP1615

- 1 SIP account, 2 lines
- Dual-switched 10/100 Mbps ports, integrated PoE (GXP1610P/PGXP1615 only)
- 3-way audio conferencing



GXP1620/GXP1625

- 2 SIP accounts, 2 lines
- Dual-switched 10/100 Mbps ports, integrated PoE on GXP1625
- 3-way audio conferencing



GXP1628

- 2 SIP accounts, 2 lines
- Dual-switched 10/100/1000 Mbps ports, integrated PoE
- 3-way audio conferencing



GXP1630

- 3 SIP accounts, 3 lines
- Dual-switched 10/100/1000 Mbps ports, integrated PoE
- 3-way audio conferencing



GXP2130 v2

- 3 SIP accounts, 3 lines
- Dual-switched 10/100/1000 Mbps ports, integrated PoE
- 3-way audio conferencing
- Integrated Bluetooth®



GXP2135

- 4 SIP accounts, 8 lines
- Dual-switched 10/100/1000 Mbps ports, integrated PoE
- 4-way audio conferencing
- Integrated Bluetooth®



GXP2140

- 4 SIP accounts, 4 lines
- Dual-switched 10/100/1000 Mbps ports, integrated PoE
- 5-way audio conferencing
- Integrated Bluetooth®
- Compatible with GXP2200 Extension Module



GXP2160

- 6 SIP accounts, 6 lines
- Dual-switched 10/100/1000 mbps ports, integrated PoE
- 5-way audio conferencing
- Integrated Bluetooth®



GXP2170

- 6 SIP accounts, 12 lines
- Dual-switched 10/100/1000 Mbps ports, integrated PoE
- 5-way audio conferencing
- Integrated Bluetooth®
- Compatible with GXP2200 Extension Module

Extension Modules



GXP2200 EXT

- 128x384 backlit LCD display
- 20 per page (each module contains 2 pages, for up to 40 lines per module)
- Connect 4 modules for up to 160 contacts/extensions



GBX20

- 4.3 inch (272x480) color LCD
- 20 per page (each module contains 2 pages, for up to 40 lines per module)
- Connect 4 modules for up to 160 contacts/extensions

PoE Injectors



GS-POE15W-MG

- PoE Injector that is compatible with GWN APs, IP Phones, and more
- Standard: IEEE 802.3 af
- Interface Ports: 1xAC power Jack, 1x2.5Gbps RJ45 LAN IN, 1x2.5Gbps RJ45 LAN OUT with PoE
- PoE Output Power: 20W



GS-POE30W-MG

- PoE Injector that is compatible with GWN APs, IP Phones, and more
- Standard: IEEE 802.3 af/at
- Interface Ports: 1xAC power Jack, 1x2.5Gbps RJ45 LAN IN, 1x2.5Gbps RJ45 LAN OUT with PoE
- PoE Output Power: 30.2W



GS-POE60W-MG

- PoE Injector that is compatible with GWN APs, IP Phones, and more
- Standard: IEEE 802.3 af/at/bt
- Interface Ports: 1xAC power Jack, 1x10Gbps RJ45 LAN IN, 1x10Gbps RJ45 LAN OUT with PoE
- PoE Output Power: 60W



GXV IP Video Phones



GXV3480

- 16 SIP accounts, 16 lines
- Runs on Android 11
- Built in PoE & Wi-Fi
- 2 mega-pixel camera and 8-inch touch screen
- 12-way audio, 3-way video



GXV3470

- 16 SIP accounts, 16 lines
- Runs on Android 11
- Built in PoE & Wi-Fi
- 2 mega-pixel camera and 7-inch touch screen
- 10-way audio, 3-way video



GXV3450

- 16 SIP accounts, 16 lines
- Runs on Android 11
- Built in PoE & Wi-Fi
- 2 mega-pixel camera and 5-inch touch screen
- 10-way audio, 3-way video conferencing

Hotel IP Phones



GHP610(W) & GHP611(W)

- 2 SIP accounts, 2 Lines
- Integrated dual-band Wi-Fi (GHP610W & GHP611W)
- Includes 1x 100Mbps network port with PoE (GHP610 & GHP611)
- Swappable faceplates



GHP620(W) & GHP621(W)

- 2 SIP accounts, 2 Lines
- Integrated dual-band Wi-Fi (GHP620W & GHP621W)
- Includes 1x 100Mbps network port with PoE (GHP620 & GHP621)
- Swappable faceplates



GHP630(W) & GHP631(W)

- 2 SIP accounts, 2 lines
- Integrated dual-band Wi-Fi 6 (GHP630W & GHP631W)
- Includes 1x 100Mbps network port with PoE (GHP630 & GHP631)
- 3.5 in. 480x320 color LCD screen



Wi-Fi Cordless IP Phones



WP810

- Wi-Fi Cordless IP Phone
- 2 SIP accounts, 2 lines
- Dual-band Wi-Fi 5
- Rechargeable battery, 6 hour talk time, 120-hour standby



WP816

- Wi-Fi Cordless IP Phone
- 2 SIP accounts, 2 lines
- Dual-band Wi-Fi 6
- Rechargeable battery, 6 hour talk time, 120-hour standby



WP820

- Wi-Fi Cordless IP Phone
- 2 SIP accounts, 2 lines
- Dual-band Wi-Fi 5
- Rechargeable battery, 7.5 hour talk time, 150-hour standby



WP822

- Wi-Fi Cordless IP Phone
- 2 SIP accounts, 2 lines
- Dual-band Wi-Fi 5
- Rechargeable battery, 8 hour talk time, 200-hour standby



WP825

- Wi-Fi Cordless IP Phone
- 2 SIP accounts, 2 lines
- Dual-band Wi-Fi 5
- Rechargeable battery, 8 hour talk time, 200-hour standby
- Waterproof, drop safe 2.5m



WP826

- Wi-Fi Cordless IP Phone
- 3 SIP accounts, 3 lines
- Dual-band Wi-Fi 6
- Rechargeable battery, 12 hour talk time, 240-hour standby



WP836

- Ruggedized Wi-Fi Cordless IP Phone
- 3 SIP accounts, 3 lines
- Dual-band Wi-Fi 6
- Rechargeable battery, 10 hour talk time, 240-hour standby
- Waterproof, drop safe 2m



WP856

- Wi-Fi Smartphone
- Runs on Android™
- 6 SIP accounts, 6 lines
- Dual-band Wi-Fi 6
- 1D and 2D barcodes scanner
- Rechargeable battery, 20 hour talk time, 200-hour standby
- Waterproof, drop safe 1.5m

DECT Cordless IP Phones



DP720/DP722/DP730

- DECT Handsets
- 10 SIP accounts, 10 lines
- Supports range of up to 400m outdoors & 50m indoors



DP725

- DECT Cordless Handset
- 20 SIP accounts, 20 lines
- Supports range of up to 400m outdoors and 50m indoors
- Up to 56-hour talk time



DP735

- Ruggedized DECT Cordless HD Handset
- 20 SIP accounts, 20 lines
- Supports range of up to 400m outdoors and 50m indoors
- Up to 65-hour talk time
- Waterproof, dustproof, drop safe from 2.5m



DP750/DP752/DP755

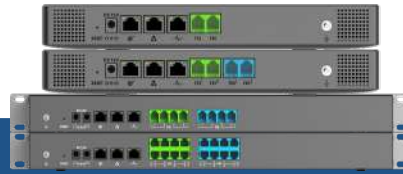
- DECT Base Stations
- 20 SIP accounts, 20 lines (DP755)
- 10 SIP accounts, 10 lines (DP750/DP752)
- Pairs with up to 10 handsets



DP760

- DECT Repeater
- 2 concurrent HD calls
- Extends range 300m outdoors & 50m indoors
- Automatic or manual association to DP750/DP752





UCM6300 & UCM6300A Series IP PBX

- UCM6300 Series: Supports up to 3000 users and 450 concurrent calls
- UCM6300A: Audio-only, supports up to 1500 users and 200 concurrent calls
- Automated NAT traversal with UCM RemoteConnect
- Compatible with the Wave App
- Compatible with GDMS for cloud management



CloudUCM

- Cloud PBX solution that supports up to 200 users and 64 concurrent calls
- Built-in Session Border Controller (SBC)
- Hosted on AWS
- Compatible with the Wave App, GDMS, and UCMRC
- Visit cloud.grandstream.com/clouducm for more and to sign up



SoftwareUCM

- Software PBX solution that supports 50-5000 users and up to 1000 concurrent calls
- Built-in audio, video, chat, and web meeting platform
- Compatible with the Wave App, GDMS, and UCMRC



UCM RemoteConnect (UCMRC)

- Cloud based NAT firewall traversal powered by AWS
- Integrated with GDMS
- Offers secure connections with remote users and SIP endpoints using Grandstream's PBX platforms and solutions



Wave

- Communication and collaboration app for desktop, web and mobile
- Provides private and group chat, audio and video meetings/conferences, file sharing, and more
- Supports video resolutions up to 1080p HD
- Compatible with all of Grandstream's PBX platforms and solutions





GAC2500

- Runs on Android 4.4
- 6 SIP accounts, 6 lines, 7-way voice conferencing
- Integrated Wi-Fi and PoE



GAC2570

- Integrated Wi-Fi 6
- 12-party conferences
- 12 omnidirectional microphones with MMAD
- Pairs with GMD1208



GMD1208

- Extension microphone companion device
- Built-in 8 omni-directional MEMS with 5-meter pickup range
- 1500mA built-in Li-Ion battery
- Bluetooth® v2.1+EDR

ATAs & Gateways



**HT812 v2 - HT814 v2
HT818 v2**

- Supports 2 SIP profiles and 2/4/8 FXS ports
- High performance NAT router
- Strong AES encryption with security certificate per unit



HT813

- Supports 2 SIP profiles through 1 FXS & 1 FXO port
- 2x 100Mbps LAN/WAN ports
- Strong AES encryption with security certificate per unit



HT801 v2 - HT802 v2

- Supports 1/2 SIP profiles through 1/2 FXS ports and a single 10/100Mbps port
- Failover SIP server
- TLS and SRTP security encryption technology



HT841/HT881


- Supports 3 SIP profiles through 1 FXS port and 4/8 FXO ports
- High-performance NAT router Strong AES encryption with security certificate per unit



GXW4200 Series v2

- 16/24/32 FXS ports, GXW4248 includes 2 50-pin Telco connectors
- 1 Gigabit network port
- 4 SIP server profiles per system

Facility Access Systems




GDS3725

- 4K ultra HD camera
- AI-based behavior analysis
- Solid State Relay (SSR) Protection
- Metal Casing and IK10 resistant
- 15-key numeric keypad
- Pairs with the SecureAccess App



GDS3726

- 4K ultra HD camera
- AI-based behavior analysis
- Solid State Relay (SSR) Protection
- Metal Casing and IK10 resistant
- 1 doorbell key
- Pairs with the SecureAccess App



GDS3727

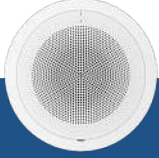
- 4K ultra HD camera
- AI-based behavior analysis
- Solid State Relay (SSR) Protection
- Plastic Casing and IK07 resistant
- Integrated bluetooth and Wi-Fi 6
- Pairs with the SecureAccess App



Grandstream SecureAccess App

- Platforms supported: Android 10.0+, iOS 13+
- Models: GDS3720 Series
- Cloud based access control management solution

Intercoms & PA



GSC3506 v2

- Multicast Paging Speaker
- SIP paging, multicast paging, call-waiting
- One 10/100Mbps network port with PoE/ PoE+
- 1x 3-pin differential line out port
- 1x 2-pin switch-in input port, 1x Alarm-in input port, 1x DC24V, 1x network, and 1x USB port



GSC3516

- Multicast Talk-Back Speaker
- Full-duplex speakerphone with HD acoustic chamber, advanced acoustic echo cancellation
- 3 directional mics, 1omnidirectional mic
- Integrated Wi-Fi and Bluetooth®
- One 10/100Mbps network port with PoE/ PoE+
- 2-pin multi-purpose input



GSC3518HS

- SIP/Multicast Talk-Back Horn Speaker
- 50W high power amplifier speaker
- One 10/100Mbps network port with PoE/PoE+/PoE++ input
- Supports differential LINE IN and LINE OUT connections
- Supports Airplay, ONVIF, RTSP/HTTP streaming, local audio files, and mobile app playback
- Supports IP66 waterproof and dustproof



GSC3570, GS3574, GSC3575

- Intercom & Facility Control Stations
- GSC3574/GSC3575: Android v13, 7-inch touch screen, Wi-Fi 6, Bluetooth 5.0, 8x alarm input, 2x alarm output
- GSC3570: 7-inch touch screen, Wi-Fi, 4 alarm input, 1 alarm output
- Dual-band 802.11 ac Wi-Fi
- 4x alarm input ports and 1x alarm output port for customized deployments



Our Segments



Esteemed Customers

Enterprise	Education	Hospitality	Residential



Cohesive Technologies Pvt. Ltd

Corporate Office: CS-4, 5 & 6, 4th Floor, Ansal Plaza, Sector 3, Vaishali, Ghaziabad (U.P.) - 201010, India.

Contact No: +91 120 4830000, +91 7290000544

Registered Office: 169, FIE, 1st Floor Patparganj Industrial Area, Delhi-110092, India

Email: info@cohesiveglobal.com, info@grandstreamindia.com

Web: www.cohesiveglobal.com, www.grandstreamindia.com, www.snom-india.com

Technology Partners

