

AI LPR Motorized Bullet Network Camera



IP67 + IK10

Motorized Lens



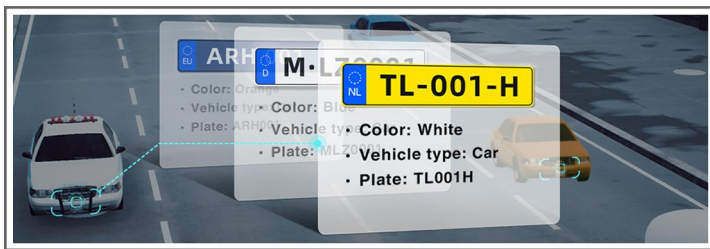
DATASHEET

KEY FEATURES

- ▶ Smart IR II (Combining the High Beam and Low Beam to adjust IR intensity to fit different lighting conditions.)
- ▶ Advanced Functions (Boasting to support various advanced functions such as HLC, Defog, ROI.)
- ▶ 256G (Supporting ultra-large external microSD/SDHC/SDXC card storage up to 256G.)
- ▶ Adjustable 3-Axis Bracket (Providing a robust mounting platform for angle adjustments on a 3-axis plane.)
- ▶ Smart Stream (Bandwidth, storage and bit rate are saved with Smart Stream On, eg, H.265+ saves 70%~80% bandwidth that of H.264.)

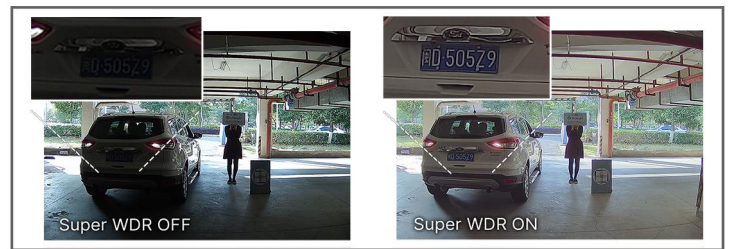
AI-powered LPR Algorithm

Based on AI algorithm, the LPR function provides value-added data via a pre-trained deep learning model, which can not only recognize vehicle plates in real time with high accuracy, but also identify more vehicle features, like vehicle type, color, etc., generating powerful security and traffic insights.



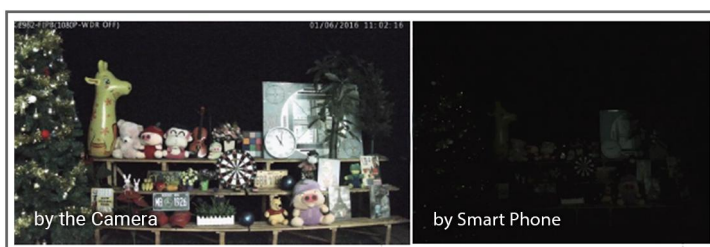
140dB Super WDR

Sensor-based WDR technology allows the camera to record greater scene details with true color reproduction even under the extreme back light and high contrast conditions. The ratio that the brightest light signal values divided by the darkest light signal values is up to 140dB.



0.002Lux Ultra Low-light

The starlight camera is able to deliver high detailed color images even in low light environment reaching 0.002Lux(Color) or 0Lux(B/W), and near infrared light environments without any supplementary lighting.



IP67&IK10

Supporting IP67-rated weather proofing and IK10-rated vandal proof which are the leading level of the industry, the camera is well protected against adverse impact to ensure the performance.



AI LPR Motorized Bullet Network Camera



| | Model | MS-C2964-R(T)F(I)LPC (2MP) | MS-C5364-F(I)LPC (5MP) |
|---|-------------------------|--|--|
| Camera | Image Sensor | 1/2.8" Progressive Scan CMOS | |
| | Min. Illumination | Color: 0.002Lux@F1.2 Color: 0.005Lux@F1.4 B/W: 0Lux with IR on | Color: 0.005Lux@F1.2 Color: 0.008Lux@F1.4 B/W: 0Lux with IR on |
| | WDR | 140dB Super WDR (Super WDR Pro is optional for T Series) | 120dB Super WDR |
| | Shutter Time | 1/100000s~1s | |
| | IR Distance | Up to 50m | |
| | Day/Night Mode | Day/Night/Auto/Customize/Schedule | |
| | S/N | >55dB | |
| | Lens | Lens | Motorized 2.7~13.5mm/3.0~10.5mm/7~22mm@F1.4 P-Iris(Optional) |
| Field of View | | H111°~H34°/D130°~D39°/V60°~V19°(2.7~13.5mm) H100°~H33°/D115°~D38°/V54°~V18°(3~10.5mm) H42°~H17°/D48°~D19°/V24°~V9°(7~22mm) | H99°~H31°/D124°~D38°/V72°~V23°(2.7~13.5mm) H89°~H31°/D111°~D38°/V66°~V23°(3.0~10.5mm) H37°~H15°/D46°~D19°/V28°~V11°(7~22mm) |
| Mount | | Φ14 | |
| Focus Control | | Auto/Manual | |
| Iris Control (Optional for I Series) | | Auto/Manual | |
| LPR | | Max. Vehicle Speed | 200km/h |
| | Recognition Accuracy | >95% | |
| | Coverage | Support simultaneous detection of 4 regions | |
| | White/Black List | Up to 1000 records inside the camera | |
| | Smart Traffic Detection | License Plate Recognition, Plate Type Classification, Plate Color Recognition, Vehicle Type Classification, Vehicle Color Recognition, Vehicle Direction Detection | |
| Video | Max. Image Resolution | 1920x1080 | 2592x1944 |
| | Primary Stream | 60Hz: 100fps@(1920x1080)(Optional for T Series) , 60fps@(1920x1080, 1280x960, 1280x720, 704x576) 50Hz: 100fps@(1920x1080)(Optional for T Series) , 50fps@(1920x1080, 1280x960, 1280x720, 704x576) | 60Hz: 30fps@(2592x1944), 45fps@(2048x1536), 60fps@(1920x1080, 1280x960, 1280x720, 704x576) 50Hz: 25fps@(2592x1944), 45fps@(2048x1536), 50fps@(1920x1080, 1280x960, 1280x720, 704x576) |
| | Secondary Stream | 60Hz: 60fps@(704x576, 640x480, 640x360, 352x288, 320x240, 320x192, 320x180) 50Hz: 50fps@(704x576, 640x480, 640x360, 352x288, 320x240, 320x192, 320x180) | 60Hz: 30fps@(704x576, 640x480, 640x360, 352x288, 320x240, 320x192, 320x180) 50Hz: 25fps@(704x576, 640x480, 640x360, 352x288, 320x240, 320x192, 320x180) |
| | Tertiary Stream | 60Hz: 30fps@(1920x1080, 1280x720, 704x576, 640x480, 640x360, 320x240, 320x192, 320x180) 50Hz: 25fps@(1920x1080, 1280x720, 704x576, 640x480, 640x360, 320x240, 320x192, 320x180) | |
| | Video Compression | H.265+/H.265(HEVC)/H.264+/H.264/MJPEG | |
| | Video Bit Rate | 16Kbps~16Mbps(CBR/VBR Adjustable) | |
| | Privacy Masking | Up to 28 areas(24 mask areas and 4 mosaic areas) | |
| | ROI | Up to 8 areas | |
| | Image Setting | Brightness/Contrast/Saturation/Sharpness | |

AI LPR Motorized Bullet Network Camera

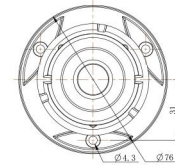
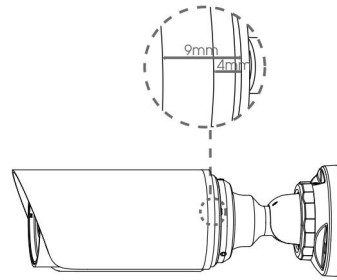
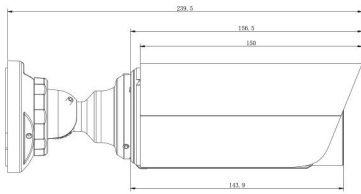
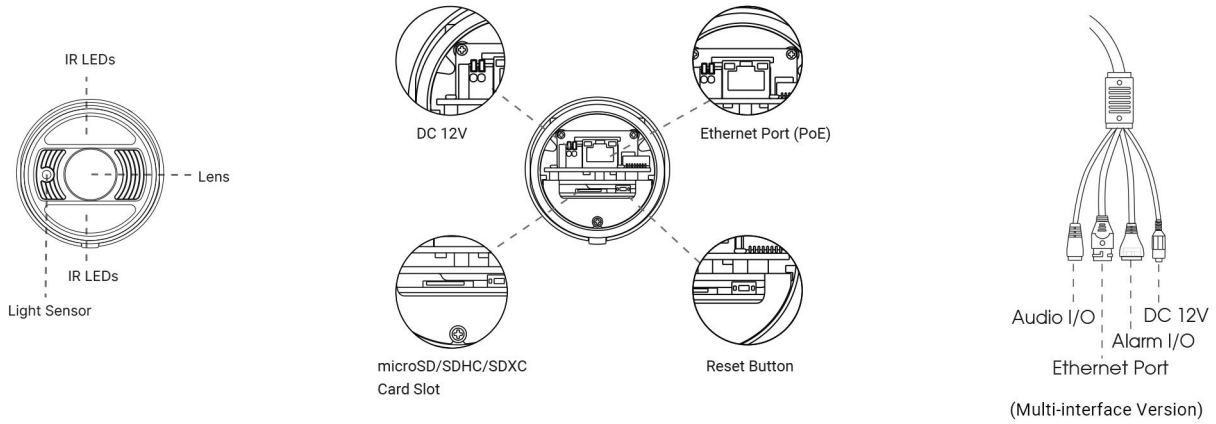


| | | |
|------------------|----------------------|--|
| Interface | Ethernet | 1*RJ45 10M/100M Ethernet Port |
| | Audio I/O | 1/1 (Multi-interface Version) |
| | Alarm I/O | 1/1 (Multi-interface Version) |
| Network | Network Storage | NAS(Support NFS, SMB/CIFS), ANR |
| | Protocol | IPv4/IPv6, ARP, TCP, UDP, RTCP, RTP, RTSP, RTMP, HTTP, HTTPS, DNS, DDNS, DHCP, FTP, NTP, SMTP, SNMP, UPnP, Bonjour, SIP, PPPoE, VLAN, 802.1x, QoS, IGMP, ICMP, SSL |
| Audio | Audio Compression | G.711/AAC/G.722/G.726 |
| | Audio Sampling Rate | 8/16/32/44.1/48KHz |
| | Audio Bit Rate | 16~256kbps |
| | Two-way Audio | Support |
| System | Storage | Support microSD/SDHC/SDXC Card Local Storage, up to 256G |
| | Advanced Function | BLC, HLC, 2D DNR, 3D DNR, Defog, AWB, EIS, IP Address Filtering, AGC, Anti-flicker, Corridor Mode, Deblur, Watermark |
| | SIP/VoIP Support | Yes, Voice & Video-over-IP |
| | Event Trigger | Black/White List, Motion Detection, Network Disconnection, etc. |
| | Event Action | FTP Upload, SMTP Upload, SD Card Record, SIP Phone, HTTP Notification, etc. |
| | System Compatibility | ONVIF Profile G & Q & S & T, API |
| General | Working Temperature | -40°C~60°C |
| | Working Humidity | 0~90%(Non-condensing) |
| | Power Supply | PoE (802.3af) / DC 12V±10% |
| | Power Consumption | 7W MAX 9W MAX (With IR on) |
| | Housing | Vandal-proof IK10-rated Metal Housing / Up to IP67-rated for Weather-resistant Performance |
| | Weight | 825g |
| | Dimensions | Φ76mmX239.5mm |
| | Warranty | 3/5 Years |

AI LPR Motorized Bullet Network Camera



Structure Diagrams



Units: mm

Accessories Support

A01 Pole Mount

Weight: 720g
Dimensions: 170*51.5*152.6mm



A03 External Corner Bracket

Weight: 900g
Dimensions: 170*152.5*76.3mm



A63 Junction Box

Weight: 620g
Dimensions: 134*126*40mm



Milesight Technology | www.milesight.com
Contact Us: sales@milesight.com support@milesight.com

Add: 220 NE 51st Street, Oakland Park, Florida 33334, USA
Tel: +1-800-561-0485

Add: 925, Anyang SK V1 Center, LS-ro 116beon-gil, Dongan-gu, Anvang-si, Korea
Tel: +82-31-990-7732

Add: Building C09, Software Park Phase III, Xiamen 361024, Fujian, China
Tel: +86-592-5922772

